

Product datasheet for **TA342883**

CD239 (BCAM) Rabbit Polyclonal Antibody

Product data:

Product Type:	Primary Antibodies
Applications:	WB
Recommended Dilution:	WB
Reactivity:	Human
Host:	Rabbit
Isotype:	IgG
Clonality:	Polyclonal
Immunogen:	The immunogen for anti-BCAM antibody: synthetic peptide directed towards the C terminal of human BCAM. Synthetic peptide located within the following region: SALSRDGISCEASNPHGNKRHVHFGTVSPQTSQAGVAVMAVAVSVGLLL
Formulation:	Liquid. Purified antibody supplied in 1x PBS buffer with 0.09% (w/v) sodium azide and 2% sucrose. <i>Note that this product is shipped as lyophilized powder to China customers.</i>
Conjugation:	Unconjugated
Storage:	Store at -20°C as received.
Stability:	Stable for 12 months from date of receipt.
Predicted Protein Size:	64 kDa
Gene Name:	basal cell adhesion molecule (Lutheran blood group)
Database Link:	NP_005572 Entrez Gene 4059 Human P50895
Background:	Lutheran blood group glycoprotein is a member of the immunoglobulin superfamily and a receptor for the extracellular matrix protein, laminin. The protein contains five, N-terminus, extracellular immunoglobulin domains, a single transmembrane domain, and a short, C-terminal cytoplasmic tail. This protein may play a role in epithelial cell cancer and in vaso-occlusion of red blood cells in sickle cell disease. Two transcript variants encoding different isoforms have been found for this gene.
Synonyms:	AU; CD239; LU; MSK19

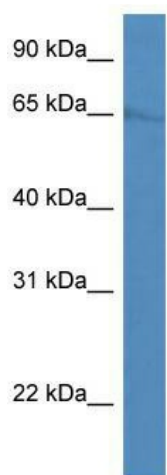


[View online »](#)

Note: Immunogen Sequence Homology: Human: 100%; Pig: 93%; Horse: 93%; Dog: 86%; Rabbit: 86%; Bovine: 79%

Protein Families: Druggable Genome, Transmembrane

Product images:



WB Suggested Anti-BCAM Antibody Titration: 0.2-1 ug/ml; ELISA Titer: 1:1562500; Positive Control: HepG2 cell lysate BCAM is strongly supported by BioGPS gene expression data to be expressed in Human HepG2 cells