

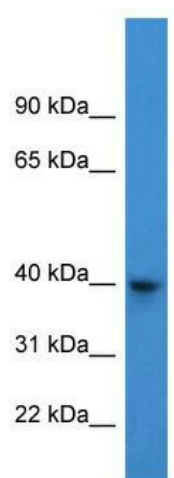
Product datasheet for **TA342881**

ARPM1 (ACTRT3) Rabbit Polyclonal Antibody

Product data:

Product Type:	Primary Antibodies
Applications:	WB
Recommended Dilution:	WB
Reactivity:	Human
Host:	Rabbit
Isotype:	IgG
Clonality:	Polyclonal
Immunogen:	The immunogen for anti-ARPM1 antibody: synthetic peptide directed towards the N terminal of human ARPM1. Synthetic peptide located within the following region: NIIGRAKGQSRAAQGGLELCVGDQAQDWRSSLFISYPVERGLITSWEDME
Formulation:	Liquid. Purified antibody supplied in 1x PBS buffer with 0.09% (w/v) sodium azide and 2% sucrose.
Conjugation:	Unconjugated
Storage:	Store at -20°C as received.
Stability:	Stable for 12 months from date of receipt.
Predicted Protein Size:	41 kDa
Gene Name:	actin related protein T3
Database Link:	NP_115876 Entrez Gene 84517 Human Q9BYD9
Background:	ARPM1 belongs to the actin family and function remains unknown.
Synonyms:	ARP-T3; ARPM1
Note:	Immunogen Sequence Homology: Human: 100%; Horse: 86%; Rabbit: 86%


[View online »](#)

Product images:

WB Suggested Anti-ARPM1 Antibody Titration:
0.2-1 ug/ml; ELISA Titer: 1:1562500; Positive
Control: 293T cell lysate