

## Product datasheet for **TA342878**

### OVGP1 Rabbit Polyclonal Antibody

#### Product data:

Product Type:	Primary Antibodies
Applications:	WB
Recommended Dilution:	WB
Reactivity:	Human
Host:	Rabbit
Isotype:	IgG
Clonality:	Polyclonal
Immunogen:	The immunogen for anti-OVGP1 antibody: synthetic peptide directed towards the C terminal of human OVGP1. Synthetic peptide located within the following region: QLPEQTPLAFDNRFPYIGNHSSVNSVTPQTSPLSLKKEIPENSAVDEEA
Formulation:	Liquid. Purified antibody supplied in 1x PBS buffer with 0.09% (w/v) sodium azide and 2% sucrose. <i>Note that this product is shipped as lyophilized powder to China customers.</i>
Conjugation:	Unconjugated
Storage:	Store at -20°C as received.
Stability:	Stable for 12 months from date of receipt.
Predicted Protein Size:	75 kDa
Gene Name:	oviductal glycoprotein 1
Database Link:	<a href="#">NP_002548</a> <a href="#">Entrez Gene 5016 Human Q12889</a>
Background:	OVGP1 is a large, carbohydrate-rich, epithelial glycoprotein with numerous O-glycosylation sites located within threonine, serine, and proline-rich tandem repeats. Regulation of expression may be estrogen-dependent. Gene expression and protein secretion occur during late follicular development through early cleavage-stage embryonic development. The protein is secreted from non-ciliated oviductal epithelial cells and associates with ovulated oocytes, blastomeres, and spermatozoan acrosomal regions.
Synonyms:	CHIT5; EGP; MUC9; OGP

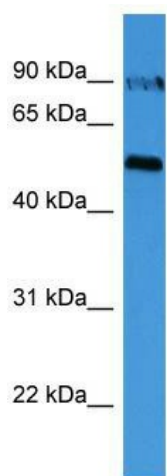


[View online »](#)

**Note:** Immunogen Sequence Homology: Human: 100%

**Protein Families:** Secreted Protein

**Product images:**



WB Suggested Anti-OVGP1 Antibody Titration:  
0.2-1 ug/ml; ELISA Titer: 1:62500; Positive Control:  
721\_B cell lysate OVGP1 is supported by BioGPS  
gene expression data to be expressed in 721\_B