

## Product datasheet for **TA342873**

### ART1 Rabbit Polyclonal Antibody

#### Product data:

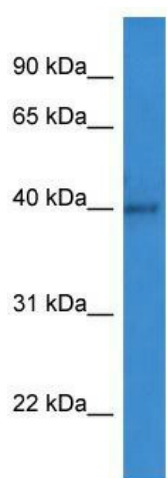
Product Type:	Primary Antibodies
Applications:	WB
Recommended Dilution:	WB
Reactivity:	Human
Host:	Rabbit
Isotype:	IgG
Clonality:	Polyclonal
Immunogen:	The immunogen for anti-ART1 antibody: synthetic peptide directed towards the C terminal of human ART1. Synthetic peptide located within the following region: KHSTYNCEYIKDKKCKSGPCHLDNSAMGQSPLSAVWSLLLLLWFLVWRAF
Formulation:	Liquid. Purified antibody supplied in 1x PBS buffer with 0.09% (w/v) sodium azide and 2% sucrose. <i>Note that this product is shipped as lyophilized powder to China customers.</i>
Conjugation:	Unconjugated
Storage:	Store at -20°C as received.
Stability:	Stable for 12 months from date of receipt.
Predicted Protein Size:	36 kDa
Gene Name:	ADP-ribosyltransferase 1
Database Link:	<a href="#">NP_004305</a> <a href="#">Entrez Gene 417 Human P52961</a>
Background:	ADP-ribosyltransferase catalyzes the ADP-ribosylation of arginine residues in proteins. Mono-ADP-ribosylation is a posttranslational modification of proteins that is interfered with by a variety of bacterial toxins including cholera, pertussis, and heat-labile enterotoxins of E. coli. The amino acid sequence consists of predominantly hydrophobic N- and C-terminal regions, which is characteristic of glycosylphosphatidylinositol (GPI)-anchored proteins.
Synonyms:	ART2; ARTC1; CD296; RT6



[View online »](#)

**Note:** Immunogen Sequence Homology: Pig: 100%; Rat: 100%; Human: 100%; Guinea pig: 100%; Horse: 92%; Bovine: 86%; Dog: 85%; Mouse: 85%

**Product images:**



WB Suggested Anti-ART1 Antibody Titration: 0.2-1 ug/ml; ELISA Titer: 1:312500; Positive Control: MCF7 cell lysate