

## Product datasheet for **TA342872**

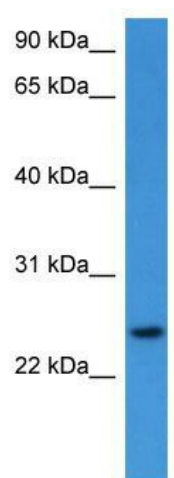
### RHOG Rabbit Polyclonal Antibody

#### Product data:

Product Type:	Primary Antibodies
Applications:	WB
Recommended Dilution:	WB
Reactivity:	Human
Host:	Rabbit
Isotype:	IgG
Clonality:	Polyclonal
Immunogen:	The immunogen for anti-RHOG antibody: synthetic peptide directed towards the C terminal of human RHOG. Synthetic peptide located within the following region: LVGTTKDLRAQPDTLRLKEQGQAPITPQQGQALAKQIHAVRYLECSALQ
Formulation:	Liquid. Purified antibody supplied in 1x PBS buffer with 0.09% (w/v) sodium azide and 2% sucrose.
Conjugation:	Unconjugated
Storage:	Store at -20°C as received.
Stability:	Stable for 12 months from date of receipt.
Predicted Protein Size:	21 kDa
Gene Name:	ras homolog family member G
Database Link:	<a href="#">NP_001656</a> <a href="#">Entrez Gene 391 Human</a> <a href="#">P84095</a>
Background:	RHOG is a member of the RAS superfamily of genes, which encode GTP-binding proteins that act in the pathway of signal transduction and play a key role in the regulation of cellular functions
Synonyms:	ARHG
Note:	Immunogen Sequence Homology: Dog: 100%; Pig: 100%; Rat: 100%; Horse: 100%; Human: 100%; Mouse: 100%; Bovine: 100%; Rabbit: 100%; Guinea pig: 100%; Zebrafish: 86%; Yeast: 83%



[View online »](#)

**Product images:**

WB Suggested Anti-RHOG Antibody Titration: 0.2-1 ug/ml; ELISA Titer: 1:312500; Positive Control: Jurkat cell lysate RHOG is supported by BioGPS gene expression data to be expressed in Jurkat