

Product datasheet for **TA342871**

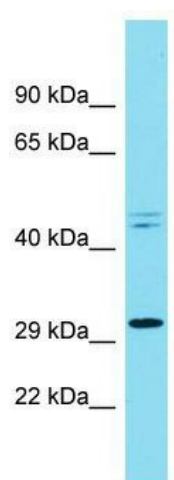
RND3 Rabbit Polyclonal Antibody

Product data:

Product Type:	Primary Antibodies
Applications:	WB
Recommended Dilution:	WB
Reactivity:	Human
Host:	Rabbit
Isotype:	IgG
Clonality:	Polyclonal
Immunogen:	The immunogen for anti-RND3 antibody is: synthetic peptide directed towards the C-terminal region of Human RND3. Synthetic peptide located within the following region: TLACVNKTNKKNVCRNKSQRATKRISHMPSRPELSAVATDLRKDKAKSCTV
Formulation:	Liquid. Purified antibody supplied in 1x PBS buffer with 0.09% (w/v) sodium azide and 2% sucrose. <i>Note that this product is shipped as lyophilized powder to China customers.</i>
Conjugation:	Unconjugated
Storage:	Store at -20°C as received.
Stability:	Stable for 12 months from date of receipt.
Predicted Protein Size:	27 kDa
Gene Name:	Rho family GTPase 3
Database Link:	NP_005159 Entrez Gene 390 Human P61587
Background:	This gene encodes a protein which is a member of the small GTPase protein superfamily. The encoded protein binds only GTP but has no GTPase activity, and appears to act as a negative regulator of cytoskeletal organization leading to loss of adhesion. Multiple alternatively spliced variants, encoding the same protein, have been identified.
Synonyms:	ARHE; memB; Rho8; RhoE
Note:	Immunogen Sequence Homology: Dog: 100%; Pig: 100%; Rat: 100%; Horse: 100%; Human: 100%; Mouse: 100%; Bovine: 100%; Rabbit: 100%; Guinea pig: 100%; Zebrafish: 79%



[View online »](#)

Product images:

Host: Rabbit; Target Name: RND3; Sample Tissue: NCI-H226 Whole Cell lysates; Antibody Dilution: 1.0 ug/ml RND3 is supported by BioGPS gene expression data to be expressed in NCIH226