

Product datasheet for **TA342870**

Factor D (CFD) Rabbit Polyclonal Antibody

Product data:

Product Type:	Primary Antibodies
Applications:	WB
Recommended Dilution:	WB
Reactivity:	Human
Host:	Rabbit
Isotype:	IgG
Clonality:	Polyclonal
Immunogen:	The immunogen for anti-CFD antibody: synthetic peptide directed towards the C terminal of human CFD. Synthetic peptide located within the following region: GRRPDSLQHVLLPVLDRATCNRRTHHDGAIERLMCAESNRRDSCCKGDSG
Formulation:	Liquid. Purified antibody supplied in 1x PBS buffer with 0.09% (w/v) sodium azide and 2% sucrose. <i>Note that this product is shipped as lyophilized powder to China customers.</i>
Conjugation:	Unconjugated
Storage:	Store at -20°C as received.
Stability:	Stable for 12 months from date of receipt.
Predicted Protein Size:	24 kDa
Gene Name:	complement factor D
Database Link:	NP_001919 Entrez Gene 1675 Human P00746
Background:	CFD is a member of the trypsin family of peptidases. The protein is a component of the alternative complement pathway best known for its role in humoral suppression of infectious agents. This protein is also a serine protease that is secreted by adipocytes into the bloodstream. Finally, this protein has a high level of expression in fat, suggesting a role for adipose tissue in immune system biology.
Synonyms:	ADIPSIN; ADN; DF; PFD



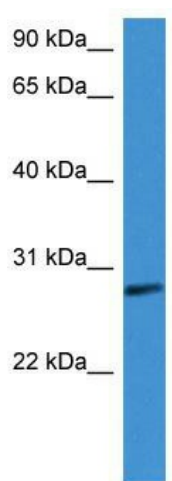
[View online »](#)

Note: Immunogen Sequence Homology: Dog: 100%; Pig: 100%; Rat: 100%; Human: 100%; Guinea pig: 100%; Bovine: 93%; Mouse: 86%

Protein Families: Druggable Genome, Protease, Secreted Protein

Protein Pathways: Complement and coagulation cascades

Product images:



WB Suggested Anti-CFD Antibody Titration: 0.2-1 ug/ml; ELISA Titer: 1:312500; Positive Control: Human Lung