

Product datasheet for **TA342869**

BD2 (DEFB4A) Rabbit Polyclonal Antibody

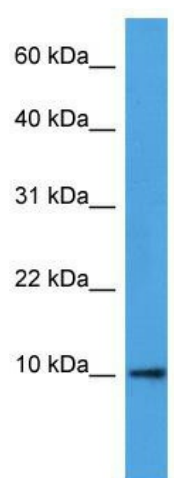
Product data:

Product Type:	Primary Antibodies
Applications:	WB
Recommended Dilution:	WB
Reactivity:	Human
Host:	Rabbit
Isotype:	IgG
Clonality:	Polyclonal
Immunogen:	The immunogen for anti-DEFB4A antibody: synthetic peptide directed towards the N terminal of human DEFB4A. Synthetic peptide located within the following region: LLFSFLFIFLMLPLPGVFGGIGDPVTCLKSGAICHVPFCPRRYKQIGTCGL
Formulation:	Liquid. Purified antibody supplied in 1x PBS buffer with 0.09% (w/v) sodium azide and 2% sucrose. <i>Note that this product is shipped as lyophilized powder to China customers.</i>
Conjugation:	Unconjugated
Storage:	Store at -20°C as received.
Stability:	Stable for 12 months from date of receipt.
Predicted Protein Size:	4 kDa
Gene Name:	defensin beta 4A
Database Link:	NP_004933 Entrez Gene 1673 Human O15263
Background:	Defensins form a family of microbicidal and cytotoxic peptides made by neutrophils. Members of the defensin family are highly similar in protein sequence. DEFB4A is locally regulated by inflammation.
Synonyms:	BD-2; DEFB-2; DEFB2; DEFB4; DEFB102; HBD-2; SAP1
Note:	Immunogen Sequence Homology: Human: 100%
Protein Families:	Druggable Genome, Secreted Protein, Transmembrane



[View online »](#)

Product images:



WB Suggested Anti-DEFB4A Antibody Titration:
0.2-1 ug/ml; ELISA Titer: 1:62500; Positive Control:
Human Placenta