

## Product datasheet for **TA342868**

### GADD45A Rabbit Polyclonal Antibody

#### Product data:

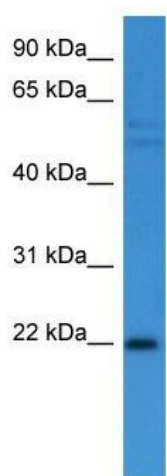
Product Type:	Primary Antibodies
Applications:	WB
Recommended Dilution:	WB
Reactivity:	Human
Host:	Rabbit
Isotype:	IgG
Clonality:	Polyclonal
Immunogen:	The immunogen for anti-GADD45A antibody: synthetic peptide directed towards the C terminal of human GADD45A. Synthetic peptide located within the following region: LRVSNPGRLAELLLLLETDAGPAASEGAEQPPDLHCVLVTNPSSQWKDPA
Formulation:	Liquid. Purified antibody supplied in 1x PBS buffer with 0.09% (w/v) sodium azide and 2% sucrose. <i>Note that this product is shipped as lyophilized powder to China customers.</i>
Conjugation:	Unconjugated
Storage:	Store at -20°C as received.
Stability:	Stable for 12 months from date of receipt.
Predicted Protein Size:	18 kDa
Gene Name:	growth arrest and DNA damage inducible alpha
Database Link:	<a href="#">NP_001915</a> <a href="#">Entrez Gene 1647 Human P24522</a>
Background:	GADD45A responds to environmental stresses by mediating activation of the p38/JNK pathway via MTK1/MEKK4 kinase. The DNA damage-induced transcription of GADD45A gene is mediated by both p53-dependent and -independent mechanisms.
Synonyms:	DDIT1; GADD45
Note:	Immunogen Sequence Homology: Human: 100%; Bovine: 100%; Pig: 93%; Rabbit: 86%; Horse: 79%
Protein Families:	Druggable Genome, Stem cell - Pluripotency



[View online »](#)

Protein Pathways: Cell cycle, MAPK signaling pathway, p53 signaling pathway

### Product images:



WB Suggested Anti-GADD45A Antibody Titration:  
0.2-1 ug/ml; ELISA Titer: 1:12500; Positive Control:  
Human heart