

Product datasheet for **TA342867**

AKR1C1 Rabbit Polyclonal Antibody

Product data:

Product Type:	Primary Antibodies
Applications:	WB
Recommended Dilution:	WB
Reactivity:	Human, Monkey
Host:	Rabbit
Isotype:	IgG
Clonality:	Polyclonal
Immunogen:	The immunogen for anti-AKR1C1 antibody: synthetic peptide directed towards the N terminal of human AKR1C1. Synthetic peptide located within the following region: DSAHLYNNEEQVGLAIRSKIADGSKREDIFYTSKLWCNSHRPELVRPAL
Formulation:	Liquid. Purified antibody supplied in 1x PBS buffer with 0.09% (w/v) sodium azide and 2% sucrose. <i>Note that this product is shipped as lyophilized powder to China customers.</i>
Conjugation:	Unconjugated
Storage:	Store at -20°C as received.
Stability:	Stable for 12 months from date of receipt.
Predicted Protein Size:	36 kDa
Gene Name:	aldo-keto reductase family 1, member C1
Database Link:	NP_001344 Entrez Gene 1645 Human Q04828
Background:	This gene encodes a member of the aldo/keto reductase superfamily, which consists of more than 40 known enzymes and proteins. These enzymes catalyze the conversion of aldehydes and ketones to their corresponding alcohols by utilizing NADH and/or NADPH as cofactors. The enzymes display overlapping but distinct substrate specificity. This enzyme catalyzes the reaction of progesterone to the inactive form 20-alpha-hydroxy-progesterone. This gene shares high sequence identity with three other gene members and is clustered with those three genes at chromosome 10p15-p14.



[View online »](#)

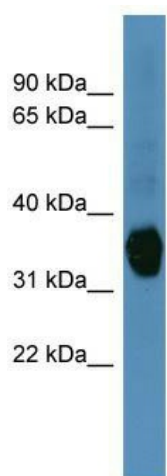
Synonyms: 2-ALPHA-HSD; 20-ALPHA-HSD; C9; DD1; DD2; DDH; DDH1; H-37; HAKRC; HBAB; MBAB

Note: Immunogen Sequence Homology: Human: 100%; Pig: 93%; Rat: 93%; Mouse: 93%; Bovine: 93%; Rabbit: 93%; Guinea pig: 93%; Dog: 92%; Horse: 86%; Sheep: 86%

Protein Families: Druggable Genome

Protein Pathways: Metabolism of xenobiotics by cytochrome P450

Product images:



WB Suggested Anti-AKR1C1 Antibody Titration:
0.2-1 ug/ml; ELISA Titer: 1:62500; Positive Control:
Human Liver