

Product datasheet for **TA342863**

CD55 Rabbit Polyclonal Antibody

Product data:

Product Type:	Primary Antibodies
Applications:	WB
Recommended Dilution:	WB
Reactivity:	Human
Host:	Rabbit
Isotype:	IgG
Clonality:	Polyclonal
Immunogen:	The immunogen for anti-CD55 antibody: synthetic peptide directed towards the middle region of human CD55. Synthetic peptide located within the following region: PGYRREPSLSPKLTCLQNLKWSTAVEFCKKSCPNPGEIRNGQIDVPGGI
Formulation:	Liquid. Purified antibody supplied in 1x PBS buffer with 0.09% (w/v) sodium azide and 2% sucrose. <i>Note that this product is shipped as lyophilized powder to China customers.</i>
Conjugation:	Unconjugated
Storage:	Store at -20°C as received.
Stability:	Stable for 12 months from date of receipt.
Predicted Protein Size:	41 kDa
Gene Name:	CD55 molecule (Cromer blood group)
Database Link:	NP_000565 Entrez Gene 1604 Human P08174
Background:	This gene encodes a protein involved in the regulation of the complement cascade. The encoded glycoprotein is also known as the decay-accelerating factor (DAF); binding of DAF to complement proteins accelerates their decay, disrupting the cascade and preventing damage to host cells. Antigens present on the DAF glycoprotein constitute the Cromer blood group system (CROM). Two alternatively spliced transcripts encoding different proteins have been identified. The predominant transcript encodes a membrane-bound protein expressed on cells exposed to plasma component proteins but an alternatively spliced transcript produces a soluble protein present at much lower levels.



[View online »](#)

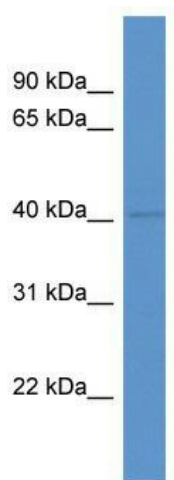
Synonyms: CR; CROM; DAF; TC

Note: Immunogen Sequence Homology: Human: 100%; Dog: 79%; Horse: 79%

Protein Families: Druggable Genome

Protein Pathways: Complement and coagulation cascades, Hematopoietic cell lineage, Viral myocarditis

Product images:



WB Suggested Anti-CD55 Antibody; Titration: 1.0 ug/ml; Positive Control: COLO205 Whole Cell