

## Product datasheet for **TA342861**

### CYP24A1 Rabbit Polyclonal Antibody

#### Product data:

Product Type:	Primary Antibodies
Applications:	WB
Recommended Dilution:	WB
Reactivity:	Human
Host:	Rabbit
Isotype:	IgG
Clonality:	Polyclonal
Immunogen:	The immunogen for anti-CYP24A1 antibody: synthetic peptide directed towards the C terminal of human CYP24A1. Synthetic peptide located within the following region: LNTKVVQDHTLAWDTIFKSVKACIDNRLEKYSQQPSADFLCDIYHQNRLS
Formulation:	Liquid. Purified antibody supplied in 1x PBS buffer with 0.09% (w/v) sodium azide and 2% sucrose. <i>Note that this product is shipped as lyophilized powder to China customers.</i>
Conjugation:	Unconjugated
Storage:	Store at -20°C as received.
Stability:	Stable for 12 months from date of receipt.
Predicted Protein Size:	55 kDa
Gene Name:	cytochrome P450 family 24 subfamily A member 1
Database Link:	<a href="#">NP_000773</a> <a href="#">Entrez Gene 1591 Human Q07973</a>
Background:	CYP24A1 is a member of the cytochrome P450 superfamily of enzymes. The cytochrome P450 proteins are monooxygenases which catalyze many reactions involved in drug metabolism and synthesis of cholesterol, steroids and other lipids. This mitochondrial protein initiates the degradation of 1,25-dihydroxyvitamin D <sub>3</sub> , the physiologically active form of vitamin D <sub>3</sub> , by hydroxylation of the side chain. In regulating the level of vitamin D <sub>3</sub> , this enzyme plays a role in calcium homeostasis and the vitamin D endocrine system.
Synonyms:	CP24; CYP24; HCAI; P450-CC24

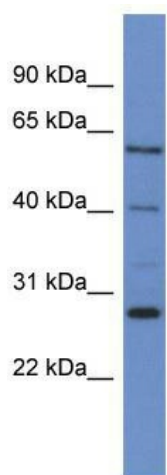


[View online »](#)

**Note:** Immunogen Sequence Homology: Human: 100%; Rabbit: 100%; Dog: 86%; Pig: 86%; Rat: 86%; Horse: 86%; Mouse: 86%; Bovine: 86%; Guinea pig: 86%

**Protein Families:** Druggable Genome

**Product images:**



WB Suggested Anti-CYP24A1 Antibody Titration:  
0.2-1 ug/ml; ELISA Titer: 1:1562500; Positive  
Control: MDA-MB-435S cell lysate