

Product datasheet for **TA342859**

CYP21A2 Rabbit Polyclonal Antibody

Product data:

Product Type:	Primary Antibodies
Applications:	IHC, WB
Recommended Dilution:	IHC, WB
Reactivity:	Human, Monkey
Host:	Rabbit
Isotype:	IgG
Clonality:	Polyclonal
Immunogen:	The immunogen for anti-CYP21A2 antibody: synthetic peptide directed towards the C terminal of human CYP21A2. Synthetic peptide located within the following region: IQQRLQEELDHELGPASSSRVPYKDRARLPLLNATIAEVLRLRPVPLA
Formulation:	Liquid. Purified antibody supplied in 1x PBS buffer with 0.09% (w/v) sodium azide and 2% sucrose. <i>Note that this product is shipped as lyophilized powder to China customers.</i>
Conjugation:	Unconjugated
Storage:	Store at -20°C as received.
Stability:	Stable for 12 months from date of receipt.
Predicted Protein Size:	56 kDa
Gene Name:	cytochrome P450 family 21 subfamily A member 2
Database Link:	NP_000491 Entrez Gene 1589 Human P08686



[View online »](#)

Background: This gene encodes a member of the cytochrome P450 superfamily of enzymes. The cytochrome P450 proteins are monooxygenases which catalyze many reactions involved in drug metabolism and synthesis of cholesterol, steroids and other lipids. This protein localizes to the endoplasmic reticulum and hydroxylates steroids at the 21 position. Its activity is required for the synthesis of steroid hormones including cortisol and aldosterone. Mutations in this gene cause congenital adrenal hyperplasia. A related pseudogene is located near this gene; gene conversion events involving the functional gene and the pseudogene are thought to account for many cases of steroid 21-hydroxylase deficiency. Two transcript variants encoding different isoforms have been found for this gene.

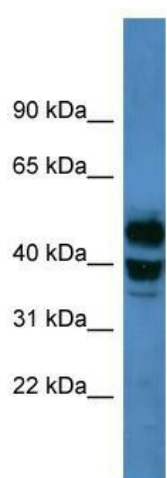
Synonyms: CA21H; CAH1; CPS1; CYP21; CYP21B; P450c21B

Note: Immunogen Sequence Homology: Human: 100%; Dog: 92%; Pig: 92%; Sheep: 92%; Bovine: 92%; Guinea pig: 80%

Protein Families: Druggable Genome, P450

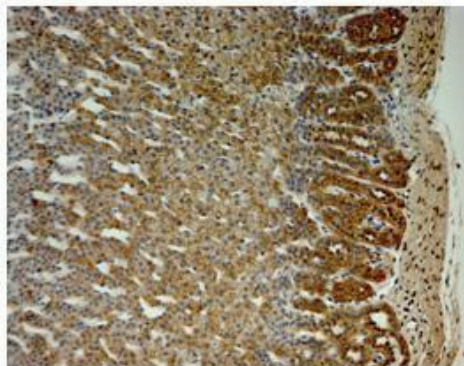
Protein Pathways: C21-Steroid hormone metabolism, Metabolic pathways

Product images:



WB Suggested Anti-CYP21A2 Antibody Titration:
0.2-1 ug/ml; ELISA Titer: 1:62500; Positive Control:
Human Muscle

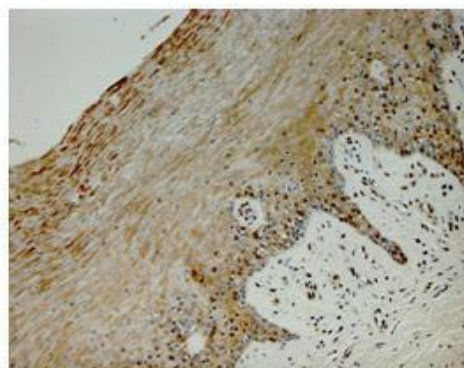
CYP21A2



Brown: CYP21A2
Blue: Nucleus

Sample Type: Monkey adrenal gland; Primary Antibody Dilution: 1:25; Secondary Antibody: Anti-rabbit-HRP; Secondary Antibody Dilution: 1:1000; Color/Signal Descriptions: Brown: CYP21A2 Blue: Nucleus; Gene Name: CYP21A2;

CYP21A2



Brown: CYP21A2
Blue: Nucleus

Sample Type: Monkey vagina; Primary Antibody Dilution: 1:25; Secondary Antibody: Anti-rabbit-HRP; Secondary Antibody Dilution: 1:1000; Color/Signal Descriptions: Brown: CYP21A2 Blue: Nucleus; Gene Name:CYP21A2