

Product datasheet for **TA342857**

CYP11B1 Rabbit Polyclonal Antibody

Product data:

Product Type:	Primary Antibodies
Applications:	IHC, WB
Recommended Dilution:	IHC, WB
Reactivity:	Human, Monkey
Host:	Rabbit
Isotype:	IgG
Clonality:	Polyclonal
Immunogen:	The immunogen for anti-CYP11B1 antibody: synthetic peptide directed towards the C terminal of human CYP11B1. Synthetic peptide located within the following region: ARNPNVQQALRQESLAAAASISEHPQKATTELP LLRAALKETLRLYPVGL
Formulation:	Liquid. Purified antibody supplied in 1x PBS buffer with 0.09% (w/v) sodium azide and 2% sucrose. <i>Note that this product is shipped as lyophilized powder to China customers.</i>
Conjugation:	Unconjugated
Storage:	Store at -20°C as received.
Stability:	Stable for 12 months from date of receipt.
Predicted Protein Size:	55 kDa
Gene Name:	cytochrome P450 family 11 subfamily B member 1
Database Link:	NP_000488 Entrez Gene 1584 Human P15538
Background:	This gene encodes a member of the cytochrome P450 superfamily of enzymes. The cytochrome P450 proteins are monooxygenases which catalyze many reactions involved in drug metabolism and synthesis of cholesterol, steroids and other lipids. This protein localizes to the mitochondrial inner membrane and is involved in the conversion of progesterone to cortisol in the adrenal cortex. Mutations in this gene cause congenital adrenal hyperplasia due to 11-beta-hydroxylase deficiency. Transcript variants encoding different isoforms have been noted for this gene.



[View online »](#)

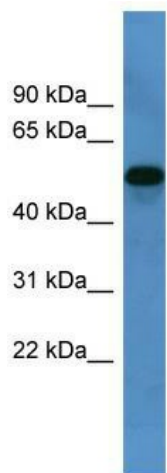
Synonyms: CPN1; CYP11B; FHI; P450C11

Note: Immunogen Sequence Homology: Human: 100%; Pig: 79%; Sheep: 79%

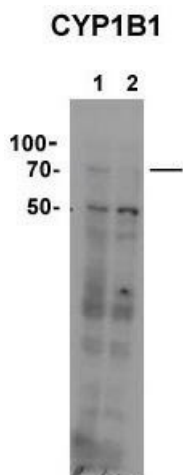
Protein Families: Druggable Genome, P450

Protein Pathways: Androgen and estrogen metabolism, C21-Steroid hormone metabolism, Metabolic pathways

Product images:

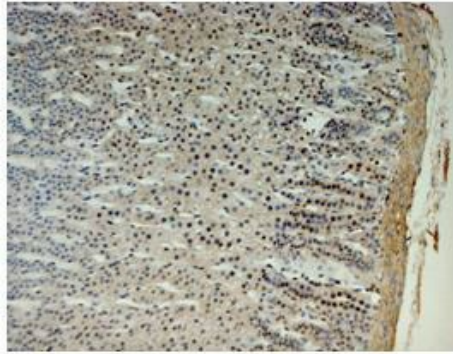


WB Suggested Anti-CYP11B1 Antibody Titration: 0.2-1 ug/ml; ELISA Titer: 1:62500; Positive Control: Human Liver



Sample type: 1. HEK293TN-GFP-hcyp11B1 (75ug); 2. HEK293TN-GFP-hcyp11B2 (75ug); Primary dilution: 1:100; Secondary Antibody: mouse anti-Rabbit HRP; Secondary Dilution: 1:10,000; Film Exposed for: 5 minutes;

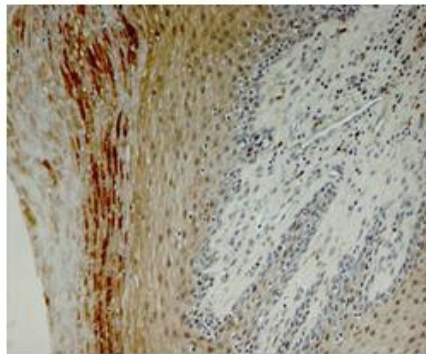
CYP11B1



Brown: CYP11B1
Blue: Nucleus

Sample Type: Monkey adrenal gland; Primary Antibody Dilution : 1:25; Secondary Antibody:Anti-rabbit-HRP; Secondary Antibody Dilution: 1:1000; Color/Signal Descriptions: Brown: CYP11B1 Blue: Nucleus; Gene Name: CYP11B1;

CYP11B1



Brown: CYP11B1
Blue: Nucleus

Sample Type: Monkey vagina; Primary Antibody Dilution: 1:25; Secondary Antibody: Anti-rabbit-HRP; Secondary Antibody Dilution: 1:1000; Color/Signal Descriptions: Brown: CYP11B1 Blue: Nucleus; Gene Name: CYP11B1; Submitted by:Jonathan Bertin, Endoceutics I