

Product datasheet for **TA342856**

CYP8B1 Rabbit Polyclonal Antibody

Product data:

Product Type:	Primary Antibodies
Applications:	WB
Recommended Dilution:	WB
Reactivity:	Human
Host:	Rabbit
Isotype:	IgG
Clonality:	Polyclonal
Immunogen:	The immunogen for anti-CYP8B1 antibody: synthetic peptide directed towards the middle region of human CYP8B1. Synthetic peptide located within the following region: SLLWPREWLEVGRLQRLFHKMLSVSHSQEKEGISNWLGNMLQLREQGVP
Formulation:	Liquid. Purified antibody supplied in 1x PBS buffer with 0.09% (w/v) sodium azide and 2% sucrose. <i>Note that this product is shipped as lyophilized powder to China customers.</i>
Conjugation:	Unconjugated
Storage:	Store at -20°C as received.
Stability:	Stable for 12 months from date of receipt.
Predicted Protein Size:	58 kDa
Gene Name:	cytochrome P450 family 8 subfamily B member 1
Database Link:	NP_004382 Entrez Gene 1582 Human Q9UNU6
Background:	This gene encodes a member of the cytochrome P450 superfamily of enzymes. The cytochrome P450 proteins are monooxygenases which catalyze many reactions involved in drug metabolism and synthesis of cholesterol, steroids and other lipids. This endoplasmic reticulum membrane protein catalyzes the conversion of 7 alpha-hydroxy-4-cholesten-3-one into 7-alpha,12-alpha-dihydroxy-4-cholesten-3-one. The balance between these two steroids determines the relative amounts of cholic acid and chenodeoxycholic acid both of which are secreted in the bile and affect the solubility of cholesterol. This gene is unique among the cytochrome P450 genes in that it is intronless.



[View online »](#)

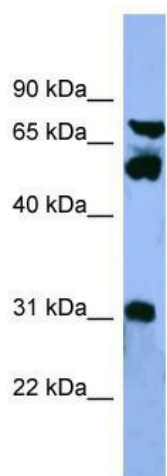
Synonyms: CP8B; CYP12

Note: Immunogen Sequence Homology: Human: 100%

Protein Families: Druggable Genome, P450, Transmembrane

Protein Pathways: Metabolic pathways, PPAR signaling pathway, Primary bile acid biosynthesis

Product images:



WB Suggested Anti-CYP8B1 Antibody Titration:
0.2-1 ug/ml; ELISA Titer: 1:62500; Positive Control:
HepG2 cell lysate