

## Product datasheet for **TA342855**

### Cytochrome P450 3A5 (CYP3A5) Rabbit Polyclonal Antibody

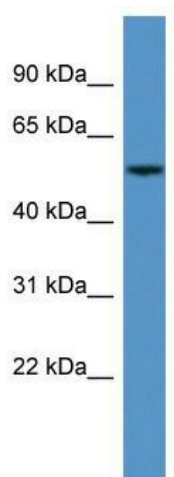
#### Product data:

Product Type:	Primary Antibodies
Applications:	WB
Recommended Dilution:	WB
Reactivity:	Human
Host:	Rabbit
Isotype:	IgG
Clonality:	Polyclonal
Immunogen:	The immunogen for anti-CYP3A5 antibody: synthetic peptide directed towards the N terminal of human CYP3A5. Synthetic peptide located within the following region: AITDPDVIRTVLVKECYSVFTNRRSLGVPVGMKSAISLAEDEEWKRIRSL
Formulation:	Liquid. Purified antibody supplied in 1x PBS buffer with 0.09% (w/v) sodium azide and 2% sucrose. <i>Note that this product is shipped as lyophilized powder to China customers.</i>
Conjugation:	Unconjugated
Storage:	Store at -20°C as received.
Stability:	Stable for 12 months from date of receipt.
Predicted Protein Size:	57 kDa
Gene Name:	cytochrome P450 family 3 subfamily A member 5
Database Link:	<a href="#">NP_000768</a> <a href="#">Entrez Gene 1577 Human P20815</a>



[View online »](#)

<b>Background:</b>	This gene, CYP3A5, encodes a member of the cytochrome P450 superfamily of enzymes. The cytochrome P450 proteins are monooxygenases which catalyze many reactions involved in drug metabolism and synthesis of cholesterol, steroids and other lipids. This protein localizes to the endoplasmic reticulum and its expression is induced by glucocorticoids and some pharmacological agents. The enzyme metabolizes drugs such as nifedipine and cyclosporine as well as the steroid hormones testosterone, progesterone and androstenedione. This gene is part of a cluster of cytochrome P450 genes on chromosome 7q21.1. This cluster includes a pseudogene, CYP3A5P1, which is very similar to CYP3A5. This similarity has caused some difficulty in determining whether cloned sequences represent the gene or the pseudogene. Multiple alternatively spliced transcript variants have been identified for this gene.
<b>Synonyms:</b>	CP35; CYP3A5; P450PCN3; PCN3
<b>Note:</b>	Immunogen Sequence Homology: Human: 100%; Pig: 93%; Guinea pig: 92%; Dog: 91%; Horse: 86%; Mouse: 82%; Rat: 79%; Sheep: 79%; Bovine: 79%
<b>Protein Families:</b>	Druggable Genome, P450, Transmembrane
<b>Protein Pathways:</b>	Drug metabolism - cytochrome P450, Drug metabolism - other enzymes, Linoleic acid metabolism, Metabolic pathways, Metabolism of xenobiotics by cytochrome P450, Retinol metabolism

**Product images:**

WB Suggested Anti-CYP3A5 Antibody Titration:  
0.2-1 ug/ml; ELISA Titer: 1:62500; Positive Control:  
Human Placenta