

## Product datasheet for **TA342854**

### Cytochrome p450 2J2 (CYP2J2) Rabbit Polyclonal Antibody

#### Product data:

Product Type:	Primary Antibodies
Applications:	WB
Recommended Dilution:	WB
Reactivity:	Human
Host:	Rabbit
Isotype:	IgG
Clonality:	Polyclonal
Immunogen:	The immunogen for anti-CYP2J2 antibody: synthetic peptide directed towards the C terminal of human CYP2J2. Synthetic peptide located within the following region: EKVQAEIDRVIGQGQPSTAARESMPYTNNAVIHEVQRMGNIPLNVPREV
Formulation:	Liquid. Purified antibody supplied in 1x PBS buffer with 0.09% (w/v) sodium azide and 2% sucrose. <i>Note that this product is shipped as lyophilized powder to China customers.</i>
Conjugation:	Unconjugated
Storage:	Store at -20°C as received.
Stability:	Stable for 12 months from date of receipt.
Predicted Protein Size:	57 kDa
Gene Name:	cytochrome P450 family 2 subfamily J member 2
Database Link:	<a href="#">NP_000766</a> <a href="#">Entrez Gene 1573 Human P51589</a>
Background:	This gene encodes a member of the cytochrome P450 superfamily of enzymes. The cytochrome P450 proteins are monooxygenases which catalyze many reactions involved in drug metabolism and synthesis of cholesterol, steroids and other lipids. This protein localizes to the endoplasmic reticulum and is thought to be the predominant enzyme responsible for epoxidation of endogenous arachidonic acid in cardiac tissue.
Synonyms:	CPJ2
Note:	Immunogen Sequence Homology: Human: 100%; Pig: 92%; Horse: 92%; Bovine: 85%; Rat: 79%

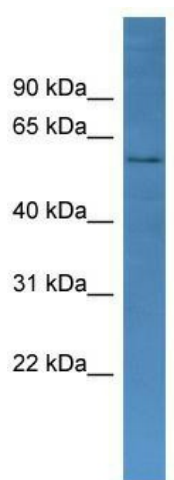


[View online »](#)

**Protein Families:** Druggable Genome, P450, Transmembrane

**Protein Pathways:** Arachidonic acid metabolism, Linoleic acid metabolism, Metabolic pathways

**Product images:**



WB Suggested Anti-CYP2J2 Antibody Titration:  
0.2-1 ug/ml; ELISA Titer: 1:62500; Positive Control:  
Human heart