

## Product datasheet for **TA342853**

### Cytochrome P450 2A6 (CYP2A6) Rabbit Polyclonal Antibody

#### Product data:

Product Type:	Primary Antibodies
Applications:	WB
Recommended Dilution:	WB
Reactivity:	Human
Host:	Rabbit
Isotype:	IgG
Clonality:	Polyclonal
Immunogen:	The immunogen for anti-CYP2A6 antibody is: synthetic peptide directed towards the C-terminal region of Human CYP2A6. Synthetic peptide located within the following region: MEAVIHEIQRFGDVIPMSLARRVKKDTKFRDFFLPKGTEVYPMLGSVLRD
Formulation:	Liquid. Purified antibody supplied in 1x PBS buffer with 0.09% (w/v) sodium azide and 2% sucrose. <i>Note that this product is shipped as lyophilized powder to China customers.</i>
Conjugation:	Unconjugated
Storage:	Store at -20°C as received.
Stability:	Stable for 12 months from date of receipt.
Predicted Protein Size:	56 kDa
Gene Name:	cytochrome P450 family 2 subfamily A member 6
Database Link:	<a href="#">NP_000753</a> <a href="#">Entrez Gene 1548 Human P11509</a>



[View online »](#)

**Background:** CYP2A6 is a member of the cytochrome P450 superfamily of enzymes. The cytochrome P450 proteins are monooxygenases which catalyze many reactions involved in drug metabolism and synthesis of cholesterol, steroids and other lipids. This protein localizes to the endoplasmic reticulum and its expression is induced by phenobarbital. The enzyme is known to hydroxylate coumarin, and also metabolizes nicotine, aflatoxin B1, nitrosamines, and some pharmaceuticals. Individuals with certain allelic variants are said to have a poor metabolizer phenotype, meaning they do not efficiently metabolize coumarin or nicotine. This gene is part of a large cluster of cytochrome P450 genes from the CYP2A, CYP2B and CYP2F subfamilies on chromosome 19q. The gene was formerly referred to as CYP2A3; however, it has been renamed CYP2A6.

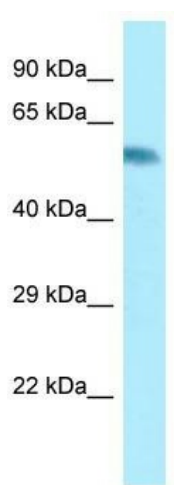
**Synonyms:** CPA6; CYP2A; CYP2A3; CYP11A6; P450C2A; P450PB

**Note:** Immunogen Sequence Homology: Human: 100%; Pig: 92%; Rat: 92%; Horse: 92%; Mouse: 92%; Sheep: 92%; Bovine: 92%; Guinea pig: 92%; Dog: 86%; Rabbit: 85%

**Protein Families:** Druggable Genome, P450, Transmembrane

**Protein Pathways:** Caffeine metabolism, Drug metabolism - cytochrome P450, Drug metabolism - other enzymes, Metabolic pathways, Retinol metabolism

### Product images:



WB Suggested Anti-CYP2A6 Antibody; Titration: 1.0 ug/ml; Positive Control: Fetal Small Intestine