

Product datasheet for **TA342851**

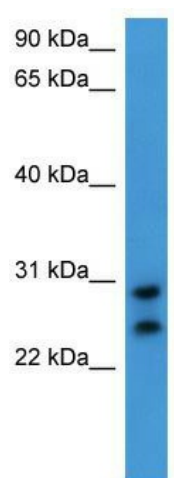
CEACAM7 Rabbit Polyclonal Antibody

Product data:

Product Type:	Primary Antibodies
Applications:	WB
Recommended Dilution:	WB
Reactivity:	Human
Host:	Rabbit
Isotype:	IgG
Clonality:	Polyclonal
Immunogen:	The immunogen for anti-CEACAM7 antibody: synthetic peptide directed towards the C terminal of human CEACAM7. Synthetic peptide located within the following region: FSEPPKPSITSNNFNPVENKDIVLTCQPETQNTTYLWWVNNQSLVSPR
Formulation:	Liquid. Purified antibody supplied in 1x PBS buffer with 0.09% (w/v) sodium azide and 2% sucrose. <i>Note that this product is shipped as lyophilized powder to China customers.</i>
Conjugation:	Unconjugated
Storage:	Store at -20°C as received.
Stability:	Stable for 12 months from date of receipt.
Predicted Protein Size:	29 kDa
Gene Name:	carcinoembryonic antigen related cell adhesion molecule 7
Database Link:	NP_008821 Entrez Gene 1087 Human Q14002
Background:	The function of CEACAM7 remains unknown.
Synonyms:	CGM2
Note:	Immunogen Sequence Homology: Human: 100%; Rat: 93%; Horse: 93%; Pig: 92%; Guinea pig: 92%; Bovine: 79%; Rabbit: 75%



[View online »](#)

Product images:

WB Suggested Anti-CEACAM7 Antibody Titration:
0.2-1 ug/ml; ELISA Titer: 1:62500; Positive Control:
Hela cell lysate