

Product datasheet for **TA342849**

CEACAM3 Rabbit Polyclonal Antibody

Product data:

Product Type:	Primary Antibodies
Applications:	WB
Recommended Dilution:	WB
Reactivity:	Human
Host:	Rabbit
Isotype:	IgG
Clonality:	Polyclonal
Immunogen:	The immunogen for anti-CEACAM3 antibody: synthetic peptide directed towards the C terminal of human CEACAM3. Synthetic peptide located within the following region: AKTGRTSIQRDLKEQQPQALAPGRGSPSHSSAFMSPLSTAQAPLPNPRTA
Formulation:	Liquid. Purified antibody supplied in 1x PBS buffer with 0.09% (w/v) sodium azide and 2% sucrose. <i>Note that this product is shipped as lyophilized powder to China customers.</i>
Conjugation:	Unconjugated
Storage:	Store at -20°C as received.
Stability:	Stable for 12 months from date of receipt.
Predicted Protein Size:	23 kDa
Gene Name:	carcinoembryonic antigen related cell adhesion molecule 3
Database Link:	NP_001806 Entrez Gene 1084 Human P40198
Background:	This gene encodes a member of the family of carcinoembryonic antigen-related cell adhesion molecules (CEACAMs), which are used by several bacterial pathogens to bind and invade host cells. The encoded transmembrane protein directs phagocytosis of several bacterial species that is dependent on the small GTPase Rac. It is thought to serve an important role in controlling human-specific pathogens by the innate immune system. Alternatively spliced transcript variants have been described, but their biological validity has not been determined.
Synonyms:	CD66D; CEA; CGM1; W264; W282

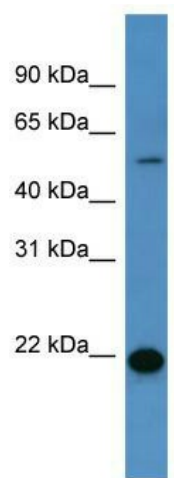


[View online »](#)

Note: Immunogen Sequence Homology: Human: 100%

Protein Families: Transmembrane

Product images:



WB Suggested Anti-CEACAM3 Antibody Titration:
0.2-1 ug/ml; ELISA Titer: 1:62500; Positive Control:
Human Liver