

## Product datasheet for **TA342848**

### hCG beta (CGB3) Rabbit Polyclonal Antibody

#### Product data:

|                         |  |
|-------------------------|--|
| Product Type:           | Primary Antibodies   |
| Applications:           | WB   |
| Recommended Dilution:   | WB   |
| Reactivity:             | Human  |
| Host:                   | Rabbit   |
| Isotype:                | IgG  |
| Clonality:              | Polyclonal   |
| Immunogen:              | The immunogen for anti-CGB antibody: synthetic peptide directed towards the C terminal of human CGB. Synthetic peptide located within the following region:<br>CRRSTTDCGGPKDHPLTCDDPRFQDSSSSKAPPPSLPSPRLPGPSDTP  |
| Formulation:            | Liquid. Purified antibody supplied in 1x PBS buffer with 0.09% (w/v) sodium azide and 2% sucrose.<br><i>Note that this product is shipped as lyophilized powder to China customers.</i>  |
| Conjugation:            | Unconjugated   |
| Storage:                | Store at -20°C as received.  |
| Stability:              | Stable for 12 months from date of receipt.   |
| Predicted Protein Size: | 16 kDa   |
| Gene Name:              | chorionic gonadotropin beta subunit 3  |
| Database Link:          | <a href="#">NP_000728</a><br><a href="#">Entrez Gene 1082 Human</a><br><a href="#">P0DN86</a>  |
| Background:             | This gene is a member of the glycoprotein hormone beta chain family and encodes the beta 3 subunit of chorionic gonadotropin (CG). Glycoprotein hormones are heterodimers consisting of a common alpha subunit and an unique beta subunit which confers biological specificity. CG is produced by the trophoblastic cells of the placenta and stimulates the ovaries to synthesize the steroids that are essential for the maintenance of pregnancy. The beta subunit of CG is encoded by 6 genes which are arranged in tandem and inverted pairs on chromosome 19q13.3 and contiguous with the luteinizing hormone beta subunit gene. |



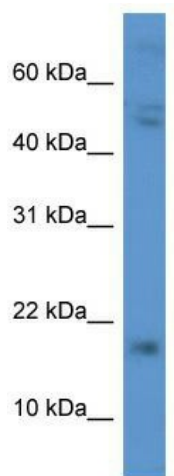
[View online »](#)

**Synonyms:** CGB3; CGB5; CGB7; CGB8; hCGB

**Note:** Immunogen Sequence Homology: Human: 100%; Rabbit: 93%; Bovine: 82%

**Protein Families:** Druggable Genome

**Product images:**



WB Suggested Anti-CGB Antibody; Titration: 1.0 ug/ml; Positive Control: MDA-MB-435S Whole Cell