

## Product datasheet for **TA342846**

### DPP1 (CTSC) Rabbit Polyclonal Antibody

#### Product data:

Product Type:	Primary Antibodies
Applications:	WB
Recommended Dilution:	WB
Reactivity:	Human
Host:	Rabbit
Isotype:	IgG
Clonality:	Polyclonal
Immunogen:	The immunogen for anti-CTSC antibody: synthetic peptide directed towards the middle region of human CTSC. Synthetic peptide located within the following region: WTATTYMEYETLTLGDMIRRSRGHRSRKIPRPKPAPLTAIEIQKILHLPTS
Formulation:	Liquid. Purified antibody supplied in 1x PBS buffer with 0.09% (w/v) sodium azide and 2% sucrose. <i>Note that this product is shipped as lyophilized powder to China customers.</i>
Conjugation:	Unconjugated
Storage:	Store at -20°C as received.
Stability:	Stable for 12 months from date of receipt.
Predicted Protein Size:	8 kDa
Gene Name:	cathepsin C
Database Link:	<a href="#">NP_001805</a> <a href="#">Entrez Gene 1075 Human</a> <a href="#">P53634</a>
Background:	CTSC is a member of the peptidase C1 family, is a lysosomal cysteine proteinase that appears to be a central coordinator for activation of many serine proteinases in immune/inflammatory cells. It is composed of a dimer of disulfide-linked heavy and light chains, both produced from a single protein precursor, and a residual portion of the propeptide acts as an intramolecular chaperone for the folding and stabilization of the mature enzyme. This enzyme requires chloride ions for activity and can degrade glucagon. Defects in CTSC have been shown to be a cause of Papillon-Lefevre syndrome, an autosomal recessive disorder characterized by palmoplantar keratosis and periodontitis.



[View online »](#)

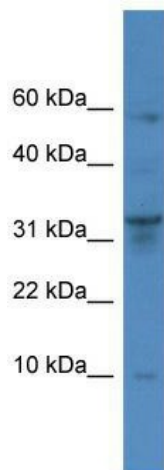
**Synonyms:** CPPI; DPP-I; DPP1; DPPI; HMS; JP; JPD; PALS; PDON1; PLS

**Note:** Immunogen Sequence Homology: Human: 100%; Horse: 86%; Bovine: 86%; Dog: 79%; Mouse: 79%

**Protein Families:** Druggable Genome, Protease

**Protein Pathways:** Lysosome

### Product images:



WB Suggested Anti-CTSC Antibody Titration: 0.2-1 ug/ml; ELISA Titer: 1:1562500; Positive Control: PANC1 cell lysate