

Product datasheet for **TA342845**

Calbindin (CALB1) Rabbit Polyclonal Antibody

Product data:

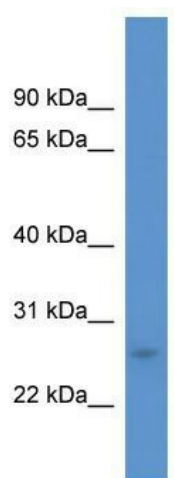
Product Type:	Primary Antibodies
Applications:	IHC, WB
Recommended Dilution:	WB, IHC
Reactivity:	Human, Tadpole
Host:	Rabbit
Isotype:	IgG
Clonality:	Polyclonal
Immunogen:	The immunogen for anti-CALB1 antibody: synthetic peptide directed towards the C terminal of human CALB1. Synthetic peptide located within the following region: EFNKAFELYDQDNGYIDENELDALLKDLCEKNKQDLINNITTYKKNIM
Formulation:	Liquid. Purified antibody supplied in 1x PBS buffer with 0.09% (w/v) sodium azide and 2% sucrose. <i>Note that this product is shipped as lyophilized powder to China customers.</i>
Conjugation:	Unconjugated
Storage:	Store at -20°C as received.
Stability:	Stable for 12 months from date of receipt.
Predicted Protein Size:	30 kDa
Gene Name:	calbindin 1
Database Link:	NP_004920 Entrez Gene 793 Human P05937
Background:	Calbindin is a calcium-binding protein belonging to the troponin C superfamily. It was originally described as a 27-kD protein induced by vitamin D in the duodenum of the chick. In the brain, its synthesis is independent of vitamin-D-derived hormones. Calbindin contains 4 active calcium-binding domains, and 2 modified domains that presumably have lost their calcium-binding capacity. The neurons in brains of patients with Huntington disease are calbindin-depleted.
Synonyms:	CALB; D-28K



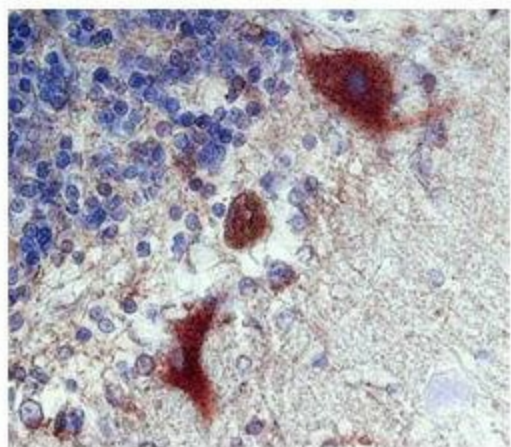
[View online »](#)

Note: Immunogen Sequence Homology: Dog: 100%; Pig: 100%; Rat: 100%; Horse: 100%; Human: 100%; Mouse: 100%; Bovine: 100%; Guinea pig: 100%; Rabbit: 93%

Product images:

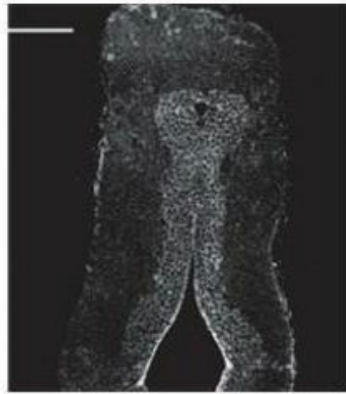


CALB1 antibody validated by WB using COLO205 cells lysate at 1 ug/ml.



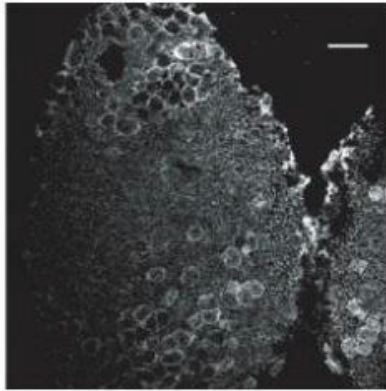
CALB1 Antibody tested with human purkinje fibers in Immunohistochemistry

CALB1

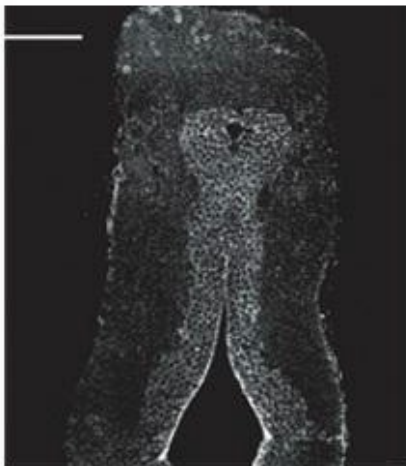


Primary Antibody Dilution: 1:500 Secondary Antibody: Donkey anti-rabbit Alexa 488 Secondary Antibody Dilution: 1:500 Gene Name: CALB1 Submitted by :Anonymous

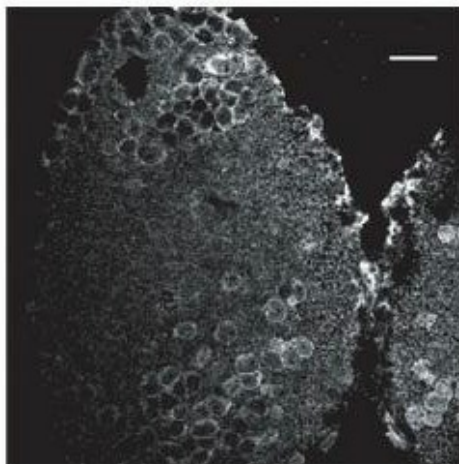
CALB1



Primary Antibody Dilution: 1:500 Secondary Antibody: Donkey anti-rabbit Alexa 488 Secondary Antibody Dilution: 1:500 Gene Name: CALB1



Species+tissue/cell type: Tadpole forebrain horizontal section; Primary antibody dilution: 1:500; Secondary antibody: Donkey anti-rabbit Alexa 488; Secondary antibody dilution: 1:500



Application: IHC; Species+tissue/cell type: Tadpole tegmenta horizontal section; Primary antibody dilution: 1:500; Secondary antibody: Donkey anti-rabbit Alexa 488; Secondary antibody dilution: 1:500