

Product datasheet for **TA342843**

CA7 Rabbit Polyclonal Antibody

Product data:

Product Type:	Primary Antibodies
Applications:	WB
Recommended Dilution:	WB
Reactivity:	Human
Host:	Rabbit
Isotype:	IgG
Clonality:	Polyclonal
Immunogen:	The immunogen for anti-CA7 antibody: synthetic peptide directed towards the C terminal of human CA7. Synthetic peptide located within the following region: SLTTPPLESVTWIVLREPICISERQMGKFRSLLFTSEDDERIHMVNNFR
Formulation:	Liquid. Purified antibody supplied in 1x PBS buffer with 0.09% (w/v) sodium azide and 2% sucrose. <i>Note that this product is shipped as lyophilized powder to China customers.</i>
Conjugation:	Unconjugated
Storage:	Store at -20°C as received.
Stability:	Stable for 12 months from date of receipt.
Predicted Protein Size:	23 kDa
Gene Name:	carbonic anhydrase 7
Database Link:	NP_001014435 Entrez Gene 766 Human P43166
Background:	Carbonic anhydrases are a large family of zinc metalloenzymes that catalyze the reversible hydration of carbon dioxide. They participate in a variety of biological processes, including respiration, calcification, acid-base balance, bone resorption, and the formation of aqueous humor, cerebrospinal fluid, saliva, and gastric acid. They show extensive diversity in tissue distribution and in their subcellular localization. The cytosolic protein encoded by this gene is predominantly expressed in the salivary glands. Alternative splicing in the coding region results in multiple transcript variants encoding different isoforms.



[View online »](#)

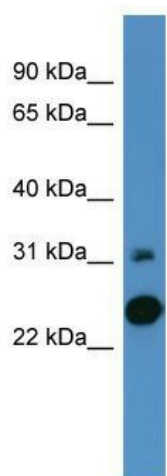
Synonyms: CAVII

Note: Immunogen Sequence Homology: Pig: 100%; Rat: 100%; Horse: 100%; Human: 100%; Mouse: 100%; Guinea pig: 100%; Dog: 93%; Bovine: 93%; Rabbit: 93%

Protein Families: Druggable Genome

Protein Pathways: Nitrogen metabolism

Product images:



WB Suggested Anti-CA7 Antibody Titration: 0.2-1 ug/ml; ELISA Titer: 1:62500; Positive Control: Human brain