

## Product datasheet for **TA342842**

### CA5A Rabbit Polyclonal Antibody

#### Product data:

Product Type:	Primary Antibodies
Applications:	WB
Recommended Dilution:	WB
Reactivity:	Human
Host:	Rabbit
Isotype:	IgG
Clonality:	Polyclonal
Immunogen:	The immunogen for anti-CA5A antibody: synthetic peptide directed towards the C terminal of human CA5A. Synthetic peptide located within the following region: AVIGVFLKLGAAHQTLQRLVDILPEIKHKDARAAMRPFDPSTLLPTCWDY
Formulation:	Liquid. Purified antibody supplied in 1x PBS buffer with 0.09% (w/v) sodium azide and 2% sucrose. <i>Note that this product is shipped as lyophilized powder to China customers.</i>
Conjugation:	Unconjugated
Storage:	Store at -20°C as received.
Stability:	Stable for 12 months from date of receipt.
Predicted Protein Size:	34 kDa
Gene Name:	carbonic anhydrase 5A
Database Link:	<a href="#">NP_001730</a> <a href="#">Entrez Gene 763 Human P35218</a>
Background:	Carbonic anhydrases (CAs) are a large family of zinc metalloenzymes that catalyze the reversible hydration of carbon dioxide. They participate in a variety of biological processes, including respiration, calcification, acid-base balance, bone resorption, and the formation of aqueous humor, cerebrospinal fluid, saliva, and gastric acid. They show extensive diversity in tissue distribution and in their subcellular localization. CA VA is localized in the mitochondria and expressed primarily in the liver. It may play an important role in ureagenesis and gluconeogenesis. CA5A gene maps to chromosome 16q24.3 and an unprocessed pseudogene has been assigned to 16p12-p11.2.



[View online »](#)

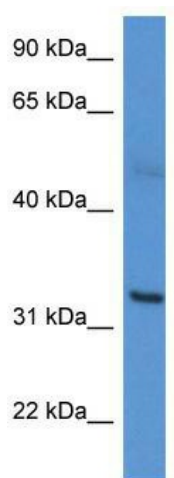
**Synonyms:** CA5; CA5AD; CAV; CAVA

**Note:** Immunogen Sequence Homology: Human: 100%; Horse: 85%; Bovine: 85%; Rat: 79%; Dog

**Protein Families:** Druggable Genome

**Protein Pathways:** Nitrogen metabolism

**Product images:**



WB Suggested Anti-CA5A Antibody Titration: 0.2-1 ug/ml; ELISA Titer: 1:312500; Positive Control: A549 cell lysate