

## Product datasheet for **TA342840**

### Carbonic Anhydrase II (CA2) Rabbit Polyclonal Antibody

#### Product data:

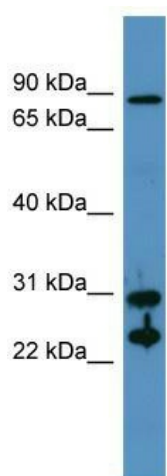
Product Type:	Primary Antibodies
Applications:	WB
Recommended Dilution:	WB
Reactivity:	Human, Rat
Host:	Rabbit
Isotype:	IgG
Clonality:	Polyclonal
Immunogen:	The immunogen for anti-CA2 antibody: synthetic peptide directed towards the N terminal of human CA2. Synthetic peptide located within the following region: SQDKAVLKGGPLDGTYRLIQFHFHWGSLDGQGSEHTVDKYYAAELHLVH
Formulation:	Liquid. Purified antibody supplied in 1x PBS buffer with 0.09% (w/v) sodium azide and 2% sucrose. <i>Note that this product is shipped as lyophilized powder to China customers.</i>
Conjugation:	Unconjugated
Storage:	Store at -20°C as received.
Stability:	Stable for 12 months from date of receipt.
Predicted Protein Size:	29 kDa
Gene Name:	carbonic anhydrase 2
Database Link:	<a href="#">NP_000058</a> <a href="#">Entrez Gene 760 Human P00918</a>
Background:	CA2 is essential for bone resorption and osteoclast differentiation. CA2 is implicated in reversible hydration of carbon dioxide. CA2 can hydrates cyanamide to urea. CA2 is involved in the regulation of fluid secretion into the anterior chamber of the eye.
Synonyms:	CA-II; CAC; CAII; Car2; HEL-76; HEL-S-282
Note:	Immunogen Sequence Homology: Dog: 100%; Pig: 100%; Horse: 100%; Human: 100%; Rat: 92%; Mouse: 92%; Rabbit: 92%; Guinea pig: 91%; Sheep: 85%; Bovine: 85%
Protein Families:	Druggable Genome



[View online »](#)

Protein Pathways: Nitrogen metabolism

### Product images:



WB Suggested Anti-CA2 Antibody Titration: 0.2-1 ug/ml; ELISA Titer: 1:62500; Positive Control: Human Muscle