

Product datasheet for **TA342836**

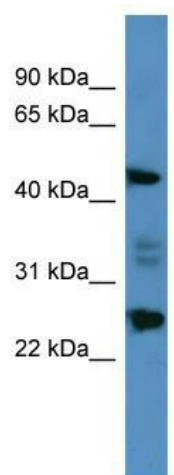
OSGIN2 Rabbit Polyclonal Antibody

Product data:

Product Type:	Primary Antibodies
Applications:	WB
Recommended Dilution:	WB
Reactivity:	Human
Host:	Rabbit
Isotype:	IgG
Clonality:	Polyclonal
Immunogen:	The immunogen for anti-OSGIN2 antibody: synthetic peptide directed towards the C terminal of human OSGIN2. Synthetic peptide located within the following region: ECIKEANLFGPLVGDNFVRFLKGGALGVTRCLATRQKKKHLFVERGGG
Formulation:	Liquid. Purified antibody supplied in 1x PBS buffer with 0.09% (w/v) sodium azide and 2% sucrose. <i>Note that this product is shipped as lyophilized powder to China customers.</i>
Conjugation:	Unconjugated
Storage:	Store at -20°C as received.
Stability:	Stable for 12 months from date of receipt.
Predicted Protein Size:	56 kDa
Gene Name:	oxidative stress induced growth inhibitor family member 2
Database Link:	NP_004328 Entrez Gene 734 Human Q9Y236
Background:	OSGIN2 may be involved in meiosis or the maturation of germ cells.
Synonyms:	C8orf1; hT41
Note:	Immunogen Sequence Homology: Dog: 100%; Horse: 100%; Human: 100%; Rabbit: 100%; Pig: 93%; Rat: 93%; Mouse: 87%; Bovine: 87%; Guinea pig: 80%



[View online »](#)

Product images:

WB Suggested Anti-OSGIN2 Antibody Titration:
0.2-1 ug/ml; ELISA Titer: 1:62500; Positive Control:
HepG2 cell lysate