

Product datasheet for **TA342835**

C5R1 (C5AR1) Rabbit Polyclonal Antibody

Product data:

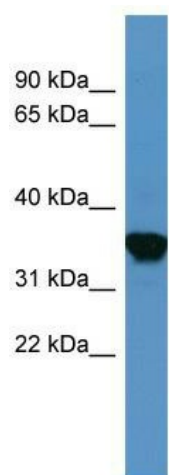
| | |
|--------------------------------|----------------------------------------------------------------------------------------------------------------------------------------------------------------------------------------------------------------------|
| Product Type: | Primary Antibodies |
| Applications: | WB |
| Recommended Dilution: | WB |
| Reactivity: | Human |
| Host: | Rabbit |
| Isotype: | IgG |
| Clonality: | Polyclonal |
| Immunogen: | The immunogen for anti-C5AR1 antibody: synthetic peptide directed towards the C terminal of human C5AR1. Synthetic peptide located within the following region: SHDKRRERAVAIIVRLVGLFWPLLLTICYTFILLRTWSRRATRSTKTLK |
| Formulation: | Liquid. Purified antibody supplied in 1x PBS buffer with 0.09% (w/v) sodium azide and 2% sucrose. <i>Note that this product is shipped as lyophilized powder to China customers.</i> |
| Conjugation: | Unconjugated |
| Storage: | Store at -20°C as received. |
| Stability: | Stable for 12 months from date of receipt. |
| Predicted Protein Size: | 39 kDa |
| Gene Name: | complement component 5a receptor 1 |
| Database Link: | NP_001727 Entrez Gene 728 Human P21730 |
| Background: | C5AR1 is the receptor for the chemotactic and inflammatory peptide anaphylatoxin C5a. This receptor stimulates chemotaxis, granule enzyme release and superoxide anion production. |
| Synonyms: | C5A; C5AR; C5R1; CD88 |
| Note: | Immunogen Sequence Homology: Human: 100%; Dog: 93%; Rat: 93%; Mouse: 93%; Rabbit: 93%; Pig: 92%; Horse: 92%; Sheep: 85%; Bovine: 85%; Guinea pig: 79% |
| Protein Families: | Druggable Genome, GPCR, Transmembrane |



[View online »](#)

Protein Pathways: Complement and coagulation cascades, Neuroactive ligand-receptor interaction

Product images:



WB Suggested Anti-C5AR1 Antibody Titration: 0.2-1 ug/ml; ELISA Titer: 1:62500; Positive Control: Human Liver