

## Product datasheet for **TA342834**

### C1R Rabbit Polyclonal Antibody

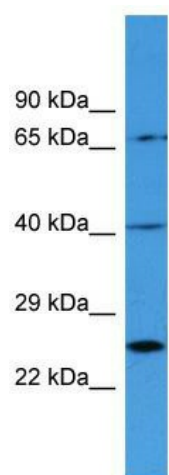
#### Product data:

Product Type:	Primary Antibodies
Applications:	WB
Recommended Dilution:	WB
Reactivity:	Human
Host:	Rabbit
Isotype:	IgG
Clonality:	Polyclonal
Immunogen:	The immunogen for anti-C1R antibody is: synthetic peptide directed towards the middle region of Human C1R. Synthetic peptide located within the following region: VDLDECASRSKSGEEDPQPQCQHLCHNYVGGYFCSRPGYELQEDRHSCQ
Formulation:	Liquid. Purified antibody supplied in 1x PBS buffer with 0.09% (w/v) sodium azide and 2% sucrose. <i>Note that this product is shipped as lyophilized powder to China customers.</i>
Purification:	Affinity Purified
Conjugation:	Unconjugated
Storage:	Store at -20°C as received.
Stability:	Stable for 12 months from date of receipt.
Predicted Protein Size:	41 kDa
Gene Name:	complement C1r subcomponent
Database Link:	<a href="#">NP_001724</a> <a href="#">Entrez Gene 715 Human</a> <a href="#">P00736</a>
Background:	The function of this protein remains unknown.
Synonyms:	complement component 1; r subcomponent
Note:	Immunogen Sequence Homology: Human: 100%
Protein Families:	Druggable Genome, Protease
Protein Pathways:	Complement and coagulation cascades, Systemic lupus erythematosus



[View online »](#)

## Product images:



Host: Rabbit; Target Name: C1R; Sample Tissue: Hela Whole cell lysates; Antibody Dilution: 1.0 ug/ml