

Product datasheet for **TA342828**

PAR2 (F2RL1) Rabbit Polyclonal Antibody

Product data:

Product Type:	Primary Antibodies
Applications:	WB
Recommended Dilution:	WB
Reactivity:	Human
Host:	Rabbit
Isotype:	IgG
Clonality:	Polyclonal
Immunogen:	The immunogen for anti-F2RL1 antibody is: synthetic peptide directed towards the C-terminal region of Human F2RL1. Synthetic peptide located within the following region: SAYVLMIRMLRSSAMDENSEKRRKRAIKLIVTVLAMYLICFTPSNLLLTV
Formulation:	Liquid. Purified antibody supplied in 1x PBS buffer with 0.09% (w/v) sodium azide and 2% sucrose. <i>Note that this product is shipped as lyophilized powder to China customers.</i>
Conjugation:	Unconjugated
Storage:	Store at -20°C as received.
Stability:	Stable for 12 months from date of receipt.
Predicted Protein Size:	44 kDa
Gene Name:	F2R like trypsin receptor 1
Database Link:	NP_005233 Entrez Gene 2150 Human P55085
Background:	Coagulation factor II (thrombin) receptor-like 1 (F2RL1) is a member of the large family of 7-transmembrane-region receptors that couple to guanosine-nucleotide-binding proteins. F2RL1 is also a member of the protease-activated receptor family. It is activated by trypsin, but not by thrombin. It is activated by proteolytic cleavage of its extracellular amino terminus. The new amino terminus functions as a tethered ligand and activates the receptor. The F2RL1 gene contains two exons and is widely expressed in human tissues. The predicted protein sequence is 83% identical to the mouse receptor sequence.



[View online »](#)

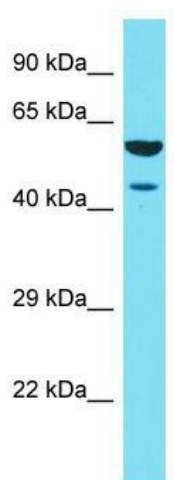
Synonyms: GPR11; PAR2

Note: Immunogen Sequence Homology: Human: 100%; Pig: 86%; Rat: 86%; Mouse: 86%; Rabbit: 86%; Dog: 85%; Bovine: 79%

Protein Families: Druggable Genome, GPCR, Transmembrane

Protein Pathways: Neuroactive ligand-receptor interaction

Product images:



Host: Rabbit; Target Name: F2RL1; Sample Tissue: HeLa Whole cell lysates; Antibody Dilution: 1.0 ug/ml