

Product datasheet for **TA342826**

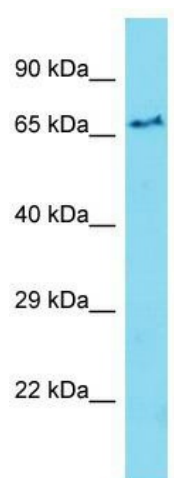
ETFDH Rabbit Polyclonal Antibody

Product data:

Product Type:	Primary Antibodies
Applications:	WB
Recommended Dilution:	WB
Reactivity:	Mouse
Host:	Rabbit
Isotype:	IgG
Clonality:	Polyclonal
Immunogen:	The immunogen for anti-Etfdh antibody is: synthetic peptide directed towards the middle region of Mouse Etfdh. Synthetic peptide located within the following region: EVLYHEDGSVKGIATNDVGIQKDGAPKTTFERGLELHAKVTVFAEGCHG
Formulation:	Liquid. Purified antibody supplied in 1x PBS buffer with 0.09% (w/v) sodium azide and 2% sucrose. <i>Note that this product is shipped as lyophilized powder to China customers.</i>
Conjugation:	Unconjugated
Storage:	Store at -20°C as received.
Stability:	Stable for 12 months from date of receipt.
Predicted Protein Size:	68 kDa
Gene Name:	electron transfer flavoprotein dehydrogenase
Database Link:	NP_004444 Entrez Gene 66841 Mouse Q16134
Background:	Etfdh accepts electrons from ETF and reduces ubiquinone.
Synonyms:	ETFQO; MADD
Note:	Immunogen Sequence Homology: Pig: 100%; Human: 100%; Guinea pig: 100%; Dog: 93%; Rat: 93%; Horse: 93%; Mouse: 93%; Bovine: 93%; Rabbit: 93%; Yeast



[View online »](#)

Product images:

Host: Rabbit; Target Name: Etfdh; Sample Tissue: Mouse Brain lysates; Antibody Dilution: 1.0 ug/ml