

Product datasheet for **TA342825**

ETFDH Rabbit Polyclonal Antibody

Product data:

Product Type:	Primary Antibodies
Applications:	WB
Recommended Dilution:	WB
Reactivity:	Human
Host:	Rabbit
Isotype:	IgG
Clonality:	Polyclonal
Immunogen:	The immunogen for anti-ETFDH antibody is: synthetic peptide directed towards the C-terminal region of Human ETFDH. Synthetic peptide located within the following region: KTIGLHVTEYEDNLKNSWWKELYSVRNIRPSCHGVLGVYGGMIYTGIFY
Formulation:	Liquid. Purified antibody supplied in 1x PBS buffer with 0.09% (w/v) sodium azide and 2% sucrose. <i>Note that this product is shipped as lyophilized powder to China customers.</i>
Conjugation:	Unconjugated
Storage:	Store at -20°C as received.
Stability:	Stable for 12 months from date of receipt.
Predicted Protein Size:	65 kDa
Gene Name:	electron transfer flavoprotein dehydrogenase
Database Link:	NP_004444 Entrez Gene 2110 Human Q16134
Background:	Electron-transferring-flavoprotein dehydrogenase in the inner mitochondrial membrane accepts electrons from electron-transfer flavoprotein which is located in the mitochondrial matrix and reduces ubiquinone in the mitochondrial membrane. The protein is synthesized as a 67-kDa precursor which is targeted to mitochondria and processed in a single step to a 64-kDa mature form located in the mitochondrial membrane. Deficiency in electron-transferring-flavoprotein dehydrogenase have been demonstrated in some patients with type II glutaricacidemia

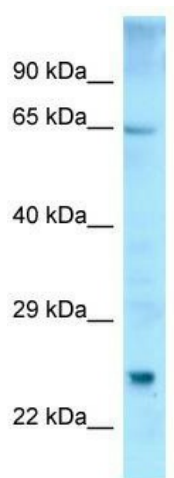


[View online »](#)

Synonyms: ETFQO; MADD

Note: Immunogen Sequence Homology: Pig: 100%; Human: 100%; Dog: 93%; Rat: 93%; Horse: 93%; Mouse: 93%; Rabbit: 93%; Bovine: 86%; Guinea pig: 86%

Product images:



WB Suggested Anti-ETFDH Antibody; Titration: 1.0 ug/ml; Positive Control: Fetal Thymus