

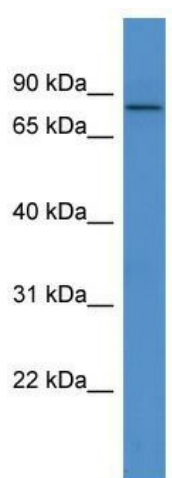
Product datasheet for TA342824

COL9A3 Rabbit Polyclonal Antibody

Product data:

Product Type:	Primary Antibodies
Applications:	WB
Recommended Dilution:	WB
Reactivity:	Human
Host:	Rabbit
Isotype:	IgG
Clonality:	Polyclonal
Immunogen:	The immunogen for anti-COL9A3 antibody: synthetic peptide directed towards the C terminal of human COL9A3. Synthetic peptide located within the following region: GSKGEKGERGRAGELGEAGPSGEPGVPGDAGMPGERGEAGHRGSAGALGP
Formulation:	Liquid. Purified antibody supplied in 1x PBS buffer with 0.09% (w/v) sodium azide and 2% sucrose.
Conjugation:	Unconjugated
Storage:	Store at -20°C as received.
Stability:	Stable for 12 months from date of receipt.
Predicted Protein Size:	63 kDa
Gene Name:	collagen type IX alpha 3
Database Link:	NP_001844 Entrez Gene 1299 Human Q14050
Background:	This gene encodes one of the three alpha chains of type IX collagen, the major collagen component of hyaline cartilage. Type IX collagen, a heterotrimeric molecule, is usually found in tissues containing type II collagen, a fibrillar collagen. Mutations in this gene are associated with multiple epiphyseal dysplasia type 3.
Synonyms:	DJ885L7.4.1; EDM3; IDD; MED
Note:	Immunogen Sequence Homology: Human: 100%; Dog: 93%; Pig: 86%; Rat: 86%; Horse: 86%; Mouse: 86%; Bovine: 86%; Rabbit: 86%; Guinea pig: 86%; Zebrafish: 85%


[View online »](#)

Product images:

WB Suggested Anti-COL9A3 Antibody Titration:
0.2-1 ug/ml; ELISA Titer: 1:62500; Positive Control:
Human heart