

## Product datasheet for **TA342823**

### COL9A3 Rabbit Polyclonal Antibody

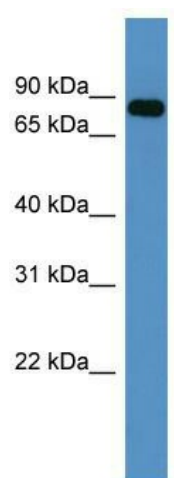
#### Product data:

Product Type:	Primary Antibodies
Applications:	WB
Recommended Dilution:	WB
Reactivity:	Human
Host:	Rabbit
Isotype:	IgG
Clonality:	Polyclonal
Immunogen:	The immunogen for anti-COL9A3 antibody: synthetic peptide directed towards the C terminal of human COL9A3. Synthetic peptide located within the following region: PGITGKPGVPGKEASEQRIRELCGGMISEQIAQLAAHLRKPLAPGSIGRP
Formulation:	Liquid. Purified antibody supplied in 1x PBS buffer with 0.09% (w/v) sodium azide and 2% sucrose. <i>Note that this product is shipped as lyophilized powder to China customers.</i>
Conjugation:	Unconjugated
Storage:	Store at -20°C as received.
Stability:	Stable for 12 months from date of receipt.
Predicted Protein Size:	63 kDa
Gene Name:	collagen type IX alpha 3
Database Link:	<a href="#">NP_001844</a> <a href="#">Entrez Gene 1299 Human Q14050</a>
Background:	This gene encodes one of the three alpha chains of type IX collagen, the major collagen component of hyaline cartilage. Type IX collagen, a heterotrimeric molecule, is usually found in tissues containing type II collagen, a fibrillar collagen. Mutations in this gene are associated with multiple epiphyseal dysplasia type 3.
Synonyms:	DJ885L7.4.1; EDM3; IDD; MED
Note:	Immunogen Sequence Homology: Pig: 100%; Rat: 100%; Human: 100%; Mouse: 100%; Guinea pig: 100%; Horse: 93%; Bovine: 93%; Rabbit: 93%; Zebrafish: 90%; Dog: 86%



[View online »](#)

## Product images:



WB Suggested Anti-COL9A3 Antibody Titration:  
0.2-1 ug/ml; ELISA Titer: 1:62500; Positive Control:  
Human heart