

Product datasheet for **TA342821**

COL8A2 Rabbit Polyclonal Antibody

Product data:

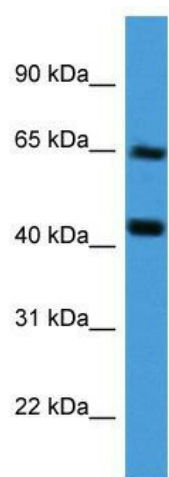
Product Type:	Primary Antibodies
Applications:	WB
Recommended Dilution:	WB
Reactivity:	Human
Host:	Rabbit
Isotype:	IgG
Clonality:	Polyclonal
Immunogen:	The immunogen for anti-COL8A2 antibody: synthetic peptide directed towards the middle region of human COL8A2. Synthetic peptide located within the following region: AAGLPGPQGPSGAKGEPGTRGPPGLIGPTGYGMPGLPGPKGDRGPAGVPG
Formulation:	Liquid. Purified antibody supplied in 1x PBS buffer with 0.09% (w/v) sodium azide and 2% sucrose. <i>Note that this product is shipped as lyophilized powder to China customers.</i>
Conjugation:	Unconjugated
Storage:	Store at -20°C as received.
Stability:	Stable for 12 months from date of receipt.
Predicted Protein Size:	67 kDa
Gene Name:	collagen type VIII alpha 2
Database Link:	NP_005193 Entrez Gene 1296 Human P25067
Background:	COL8A2 is the alpha 2 chain of type VIII collagen. The protein is a major component of the basement membrane of the corneal endothelium and forms homo- or heterotrimers with alpha 1 (VIII) type collagens. Defects in this COL8A2 gene are associated with Fuchs endothelial corneal dystrophy and posterior polymorphous corneal dystrophy type 2
Synonyms:	FECD; FECD1; PPCD; PPCD2
Note:	Immunogen Sequence Homology: Human: 100%; Zebrafish: 100%; Pig: 93%; Horse: 93%; Bovine: 93%; Rabbit: 93%; Guinea pig: 93%; Dog: 92%; Rat: 92%; Mouse: 92%; Goat: 85%



[View online »](#)

Protein Families: Druggable Genome

Product images:



WB Suggested Anti-COL8A2 Antibody Titration:
0.2-1 ug/ml; ELISA Titer: 1:312500; Positive
Control: Human Liver