

Product datasheet for **TA342818**

Collagen IV alpha 6 (COL4A6) Rabbit Polyclonal Antibody

Product data:

Product Type:	Primary Antibodies
Applications:	WB
Recommended Dilution:	WB
Reactivity:	Human
Host:	Rabbit
Isotype:	IgG
Clonality:	Polyclonal
Immunogen:	The immunogen for anti-COL4A6 antibody: synthetic peptide directed towards the middle region of human COL4A6. Synthetic peptide located within the following region: GIKKGKSLPGAPGFPGISGHPGKKGTRGKKGPPGSIVKKGLPGLKGLPGN
Formulation:	Liquid. Purified antibody supplied in 1x PBS buffer with 0.09% (w/v) sodium azide and 2% sucrose. <i>Note that this product is shipped as lyophilized powder to China customers.</i>
Conjugation:	Unconjugated
Storage:	Store at -20°C as received.
Stability:	Stable for 12 months from date of receipt.
Predicted Protein Size:	161 kDa
Gene Name:	collagen type IV alpha 6 chain
Database Link:	NP_001838 Entrez Gene 1288 Human Q14031
Background:	This gene encodes one of the six subunits of type IV collagen, the major structural component of basement membranes. Like the other members of the type IV collagen gene family, this gene is organized in a head-to-head conformation with another type IV collagen gene, alpha 5 type IV collagen, so that the gene pair shares a common promoter. Deletions in the alpha 5 gene that extend into the alpha 6 gene result in diffuse leiomyomatosis accompanying the X-linked Alport syndrome caused by the deletion in the alpha 5 gene. Two splice variants have been identified for this gene.



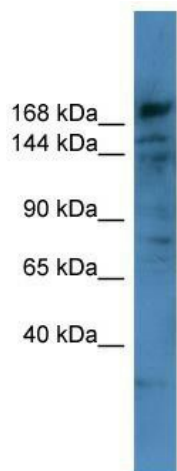
[View online »](#)

Synonyms: CXDELq22.3; DELXq22.3; DFNX6

Note: Immunogen Sequence Homology: Human: 100%

Protein Pathways: ECM-receptor interaction, Focal adhesion, Pathways in cancer, Small cell lung cancer

Product images:



WB Suggested Anti-COL4A6 Antibody Titration:
0.2-1 ug/ml; ELISA Titer: 1:62500; Positive Control:
HT1080 cell lysate