

Product datasheet for **TA342817**

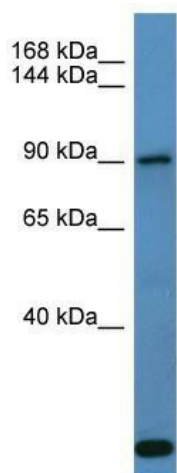
COL27A1 Rabbit Polyclonal Antibody

Product data:

Product Type:	Primary Antibodies
Applications:	WB
Recommended Dilution:	WB
Reactivity:	Human
Host:	Rabbit
Isotype:	IgG
Clonality:	Polyclonal
Immunogen:	The immunogen for anti-COL27A1 antibody is: synthetic peptide directed towards the middle region of Human COL27A1. Synthetic peptide located within the following region: LPGPKGDKGSRGDWGLQGPRGPPGPRGPPGPPGGPIQLQQDDLGAAF
Formulation:	Liquid. Purified antibody supplied in 1x PBS buffer with 0.09% (w/v) sodium azide and 2% sucrose.
Purification:	Affinity Purified
Conjugation:	Unconjugated
Storage:	Store at -20°C as received.
Stability:	Stable for 12 months from date of receipt.
Predicted Protein Size:	90 kDa
Gene Name:	collagen type XXVII alpha 1
Database Link:	NP_116277 Entrez Gene 85301 Human Q8IZC6
Background:	Fibrillar collagens, such as COL27A1, compose one of the most ancient families of extracellular matrix molecules. They form major structural elements in extracellular matrices of cartilage, skin, and tendon.
Synonyms:	STLS
Note:	Immunogen Sequence Homology: Human: 100%; Dog: 86%; Pig: 86%; Horse: 86%; Bovine: 86%; Rabbit: 86%; Rat: 85%; Mouse: 85%; Sheep: 85%; Zebrafish: 85%



[View online »](#)

Product images:

Host: Rabbit; Target Name: COL27A1; Sample
Tissue: Fetal Lung lysates; Antibody Dilution: 1.0
ug/ml