

Product datasheet for **TA342816**

Collagen IV (COL4A3) Rabbit Polyclonal Antibody

Product data:

Product Type:	Primary Antibodies
Applications:	WB
Recommended Dilution:	WB
Reactivity:	Human
Host:	Rabbit
Isotype:	IgG
Clonality:	Polyclonal
Immunogen:	The immunogen for anti-COL4A3 antibody: synthetic peptide directed towards the N terminal of human COL4A3. Synthetic peptide located within the following region: GPPGVPGSPGSSRPGLRGAPGWPLKGSKGERGRPGKDAMGTPGSPGCAG
Formulation:	Liquid. Purified antibody supplied in 1x PBS buffer with 0.09% (w/v) sodium azide and 2% sucrose.
Conjugation:	Unconjugated
Storage:	Store at -20°C as received.
Stability:	Stable for 12 months from date of receipt.
Predicted Protein Size:	156 kDa
Gene Name:	collagen type IV alpha 3 chain
Database Link:	NP_112730 Entrez Gene 1285 Human Q01955



[View online »](#)

Background:

Type IV collagen, the major structural component of basement membranes, is a multimeric protein composed of 3 alpha subunits. These subunits are encoded by 6 different genes, alpha 1 through alpha 6, each of which can form a triple helix structure with 2 other subunits to form type IV collagen. This gene encodes alpha 3. In the Goodpasture syndrome, autoantibodies bind to the collagen molecules in the basement membranes of alveoli and glomeruli. The epitopes that elicit these autoantibodies are localized largely to the non-collagenous C-terminal domain of the protein. A specific kinase phosphorylates amino acids in this same C-terminal region and the expression of this kinase is upregulated during pathogenesis. There are multiple alternate transcripts that appear to be unique to this human alpha 3 gene and alternate splicing is restricted to the six exons that encode this C-terminal domain. This gene is also linked to an autosomal recessive form of Alport syndrome. The mutations contributing to this syndrome are also located within the exons that encode this C-terminal region. Like the other members of the type IV collagen gene family, this gene is organized in a head-to-head conformation with another type IV collagen gene so that each gene pair shares a common promoter. Some exons of this gene are interspersed with exons of an uncharacterized gene which is on the opposite strand.

Synonyms:

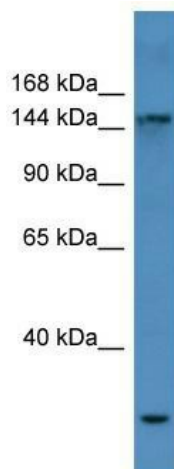
alpha-3 polypeptide; alpha 3 (Goodpasture antigen); alpha 3 type IV collagen; alpha3 type IV collagen; collagen; collagen IV; Goodpasture antigen; OTTHUMP00000195044; TUMSTATIN; tumstatin; type IV

Note:

Immunogen Sequence Homology: Human: 100%; Mouse: 92%; Horse: 86%; Pig: 85%; Rabbit: 85%; Guinea pig: 85%

Protein Families:

Druggable Genome

Product images:


WB Suggested Anti-COL4A3 Antibody Titration:
0.2-1 ug/ml; ELISA Titer: 1:62500; Positive Control:
Human Liver