

## Product datasheet for **TA342814**

### Collagen I (COL1A1) Rabbit Polyclonal Antibody

#### Product data:

Product Type:	Primary Antibodies
Applications:	IHC, WB
Recommended Dilution:	IHC, WB
Reactivity:	Human, Mouse
Host:	Rabbit
Isotype:	IgG
Clonality:	Polyclonal
Immunogen:	The immunogen for anti-COL1A1 antibody: synthetic peptide directed towards the C terminal of human COL1A1. Synthetic peptide located within the following region: PPGPPSAGFDFSFLPQPPQEKAHDGGRYRADDANVVRDRDLEVDTTLKS
Formulation:	Liquid. Purified antibody supplied in 1x PBS buffer with 0.09% (w/v) sodium azide and 2% sucrose. <i>Note that this product is shipped as lyophilized powder to China customers.</i>
Conjugation:	Unconjugated
Storage:	Store at -20°C as received.
Stability:	Stable for 12 months from date of receipt.
Predicted Protein Size:	137 kDa
Gene Name:	collagen type I alpha 1
Database Link:	<a href="#">NP_000079</a> <a href="#">Entrez Gene 12842 Mouse</a> <a href="#">Entrez Gene 1277 Human</a> <a href="#">P02452</a>



[View online »](#)

**Background:** This gene encodes the pro-alpha1 chains of type I collagen whose triple helix comprises two alpha1 chains and one alpha2 chain. Type I is a fibril-forming collagen found in most connective tissues and is abundant in bone, cornea, dermis and tendon. Mutations in this gene are associated with osteogenesis imperfecta types I-IV, Ehlers-Danlos syndrome type VIIA, Ehlers-Danlos syndrome Classical type, Caffey Disease and idiopathic osteoporosis. Reciprocal translocations between chromosomes 17 and 22, where this gene and the gene for platelet-derived growth factor beta are located, are associated with a particular type of skin tumor called dermatofibrosarcoma protuberans, resulting from unregulated expression of the growth factor. Two transcripts, resulting from the use of alternate polyadenylation signals, have been identified for this gene.

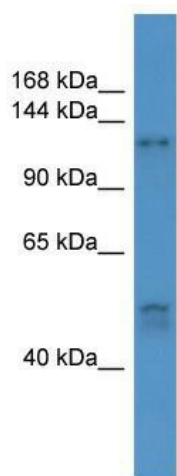
**Synonyms:** EDSC; OI1; OI2; OI3; OI4

**Note:** Immunogen Sequence Homology: Dog: 100%; Human: 100%; Bovine: 100%; Horse: 93%; Rabbit: 92%; Pig: 86%; Rat: 86%; Mouse: 86%; Guinea pig: 86%

**Protein Families:** Druggable Genome

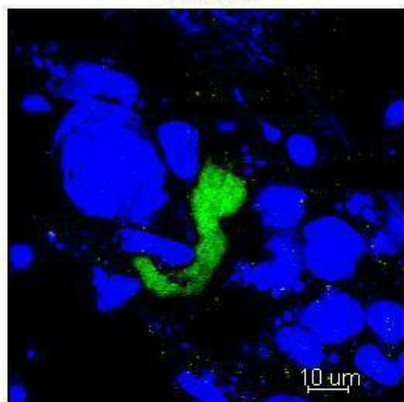
**Protein Pathways:** ECM-receptor interaction, Focal adhesion

### Product images:



WB Suggested Anti-COL1A1 Antibody Titration:  
0.2-1 ug/ml; ELISA Titer: 1:62500; Positive Control:  
Human Muscle

COL1A1



Green: Collagen Blue: DAPI

Application: IHC; Species+tissue/cell type:  
Species+tissue/cell type: Mouse blastocyte;  
Primary antibody dilution: 1:200; Secondary  
antibody: Anti-rabbit-Alexa 488; Secondary  
antibody dilution: 1:200