

Product datasheet for **TA342812**

CNTF Receptor alpha (CNTFR) Rabbit Polyclonal Antibody

Product data:

Product Type:	Primary Antibodies
Recommended Dilution:	WB
Reactivity:	Human
Host:	Rabbit
Isotype:	IgG
Clonality:	Polyclonal
Immunogen:	The immunogen for anti-CNTFR antibody: synthetic peptide directed towards the C terminal of human CNTFR. Synthetic peptide located within the following region: VAAHATPWTEEPRLTTEAQAATTSTTSSLAPPPTTKICDPGELGSGG
Formulation:	Liquid. Purified antibody supplied in 1x PBS buffer with 0.09% (w/v) sodium azide and 2% sucrose.
Conjugation:	Unconjugated
Storage:	Store at -20°C as received.
Stability:	Stable for 12 months from date of receipt.
Predicted Protein Size:	41 kDa
Gene Name:	ciliary neurotrophic factor receptor
Database Link:	NP_001833 Entrez Gene 1271 Human P26992
Background:	This gene encodes a hematopoietin/interferon-class receptor belonging to the cytokine superfamily of receptors. The encoded gene product represents the CNTF-specific alpha subunit of a heterotrimer forming the CNTF receptor complex, which also includes LIFR and gp130. The receptor is attached to the membrane by a glycosyl-phosphatidylinositol linkage and contains an immunoglobulin-like C2-type domain and a fibronectin type-III domain. Signal transduction requires that CNTF bind first to this alpha component, which permits the recruitment of gp130 and LIFR beta to form the tripartite receptor complex. Signal transduction stimulates gene expression, cell survival or differentiation in a variety of neuronal cell types. Alternative splicing has been observed at this locus and two variants, both encoding the same protein, have been identified.



[View online »](#)

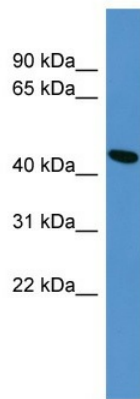
Synonyms: MGC1774

Note: Immunogen Sequence Homology: Human: 100%; Dog: 93%; Pig: 93%; Rat: 93%; Horse: 93%; Mouse: 93%; Sheep: 93%; Bovine: 93%; Rabbit: 93%; Guinea pig: 93%

Protein Families: Druggable Genome

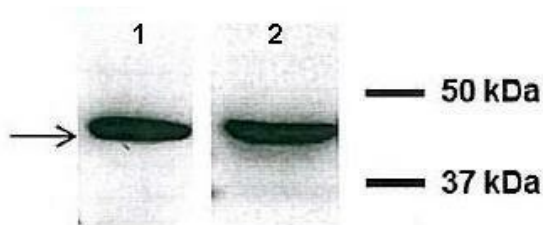
Protein Pathways: Cytokine-cytokine receptor interaction, Jak-STAT signaling pathway

Product images:



WB Suggested Anti-CNTFR Antibody Titration: 0.2-1 ug/ml
 ELISA Titer: 1:62500
 Positive Control: HepG2 cell lysate

CNTFR



A549, H441

See Immunoblot 2 Data and customer Feedback for more Information