

## Product datasheet for **TA342811**

### Cannabinoid Receptor I (CNR1) Rabbit Polyclonal Antibody

#### Product data:

Product Type:	Primary Antibodies
Applications:	WB
Recommended Dilution:	WB
Reactivity:	Human
Host:	Rabbit
Isotype:	IgG
Clonality:	Polyclonal
Immunogen:	The immunogen for anti-CNR1 antibody: synthetic peptide directed towards the N terminal of human CNR1. Synthetic peptide located within the following region: ADQVNITEFYNKSLSSFKENEENIQCGENFMDIECFMVLNPSQQLAIAVL
Formulation:	Liquid. Purified antibody supplied in 1x PBS buffer with 0.09% (w/v) sodium azide and 2% sucrose. <i>Note that this product is shipped as lyophilized powder to China customers.</i>
Conjugation:	Unconjugated
Storage:	Store at -20°C as received.
Stability:	Stable for 12 months from date of receipt.
Predicted Protein Size:	45 kDa
Gene Name:	cannabinoid receptor 1 (brain)
Database Link:	<a href="#">NP_057167</a> <a href="#">Entrez Gene 1268 Human P21554</a>
Background:	This gene encodes one of two cannabinoid receptors. The cannabinoids, principally delta-9-tetrahydrocannabinol and synthetic analogs, are psychoactive ingredients of marijuana. The cannabinoid receptors are members of the guanine-nucleotide-binding protein (G-protein) coupled receptor family, which inhibit adenylate cyclase activity in a dose-dependent, stereoselective and pertussis toxin-sensitive manner. The two receptors have been found to be involved in the cannabinoid-induced CNS effects (including alterations in mood and cognition) experienced by users of marijuana.



[View online »](#)

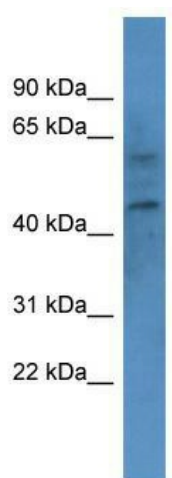
**Synonyms:** CANN6; CB-R; CB1; CB1A; CB1K5; CB1R; CNR

**Note:** Immunogen Sequence Homology: Rat: 100%; Human: 100%; Mouse: 100%; Bovine: 100%; Dog: 93%; Horse: 93%; Rabbit: 93%; Pig: 86%; Guinea pig: 86%

**Protein Families:** Druggable Genome, GPCR, Transmembrane

**Protein Pathways:** Neuroactive ligand-receptor interaction

### Product images:



WB Suggested Anti-CNR1 Antibody; Titration: 1.0 ug/ml; Positive Control: COLO205 Whole Cell