

## Product datasheet for **TA342806**

### APJ Receptor (APLNR) Rabbit Polyclonal Antibody

#### Product data:

Product Type:	Primary Antibodies
Applications:	WB
Recommended Dilution:	WB
Reactivity:	Human
Host:	Rabbit
Isotype:	IgG
Clonality:	Polyclonal
Immunogen:	The immunogen for anti-APLNR antibody: synthetic peptide directed towards the N terminal of human APLNR. Synthetic peptide located within the following region: NGLVLWTVFRSSREKRRSADIFIASLAVADLTFVVTLPWATYTYRDYDW
Formulation:	Liquid. Purified antibody supplied in 1x PBS buffer with 0.09% (w/v) sodium azide and 2% sucrose. <i>Note that this product is shipped as lyophilized powder to China customers.</i>
Conjugation:	Unconjugated
Storage:	Store at -20°C as received.
Stability:	Stable for 12 months from date of receipt.
Predicted Protein Size:	43 kDa
Gene Name:	apelin receptor
Database Link:	<a href="#">NP_005152</a> <a href="#">Entrez Gene 187 Human P35414</a>
Background:	This gene encodes a member of the G protein-coupled receptor gene family. The encoded protein is related to the angiotensin receptor, but is actually an apelin receptor that inhibits adenylate cyclase activity and plays a counter-regulatory role against the pressure action of angiotensin II by exerting hypertensive effect. It functions in the cardiovascular and central nervous systems, in glucose metabolism, in embryonic and tumor angiogenesis and as a human immunodeficiency virus (HIV-1) coreceptor. Two transcript variants resulting from alternative splicing have been identified.



[View online »](#)

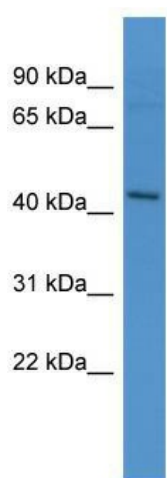
**Synonyms:** AGTRL1; APJ; APJR; HG11

**Note:** Immunogen Sequence Homology: Horse: 100%; Human: 100%; Dog: 93%; Rat: 93%; Mouse: 93%; Rabbit: 93%; Pig: 86%; Guinea pig: 86%

**Protein Families:** Druggable Genome, GPCR, Transmembrane

**Protein Pathways:** Neuroactive ligand-receptor interaction

### Product images:



WB Suggested Anti-APLNR Antibody Titration: 0.2-1 ug/ml; ELISA Titer: 1:62500; Positive Control: MCF7 cell lysate