

Product datasheet for **TA342805**

Angiotensin II Type 2 Receptor (AGTR2) Rabbit Polyclonal Antibody

Product data:

Product Type:	Primary Antibodies
Applications:	WB
Recommended Dilution:	WB
Reactivity:	Human, Mouse
Host:	Rabbit
Isotype:	IgG
Clonality:	Polyclonal
Immunogen:	The immunogen for anti-AGTR2 antibody: synthetic peptide directed towards the N terminal of human AGTR2. Synthetic peptide located within the following region: LHFGLVNISGNNESTLNC SQKPSDKHLDAIPILYIIFVIGFLVNIVVT
Formulation:	Liquid. Purified antibody supplied in 1x PBS buffer with 0.09% (w/v) sodium azide and 2% sucrose. <i>Note that this product is shipped as lyophilized powder to China customers.</i>
Conjugation:	Unconjugated
Storage:	Store at -20°C as received.
Stability:	Stable for 12 months from date of receipt.
Predicted Protein Size:	41 kDa
Gene Name:	angiotensin II receptor type 2
Database Link:	NP_000677 Entrez Gene 11609 Mouse Entrez Gene 186 Human P50052
Background:	The protein encoded by this gene belongs to the G-protein coupled receptor 1 family, and functions as a receptor for angiotensin II. It is an integral membrane protein that is highly expressed in fetus, but scantily in adult tissues, except brain, adrenal medulla, and atretic ovary. This receptor has been shown to mediate programmed cell death and this apoptotic function may play an important role in developmental biology and pathophysiology. Mutations in this gene are been associated with X-linked mental retardation.
Synonyms:	AT2; ATGR2; MRX88



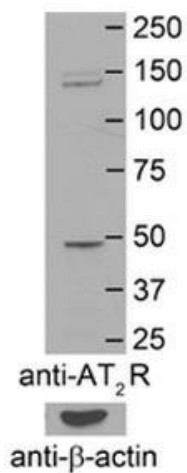
[View online »](#)

Note: Immunogen Sequence Homology: Human: 100%; Rat: 93%; Dog: 86%; Pig: 86%; Bovine: 86%; Horse: 79%; Mouse: 79%; Rabbit: 79%

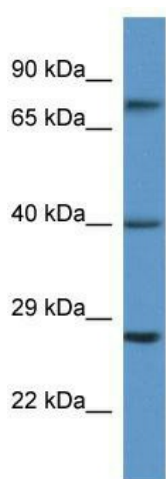
Protein Families: Druggable Genome, GPCR, Transmembrane

Protein Pathways: Neuroactive ligand-receptor interaction, Renin-angiotensin system

Product images:



AGTR2 antibody validated by WB using Mouse brain membranes at 1:4,000.



AGTR2 antibody validated by WB using Fetal Heart at 0.2-1 ug/ml.