

## Product datasheet for **TA342802**

### AP2 alpha (AP2A1) Rabbit Polyclonal Antibody

#### Product data:

Product Type:	Primary Antibodies
Applications:	WB
Recommended Dilution:	WB
Reactivity:	Human
Host:	Rabbit
Isotype:	IgG
Clonality:	Polyclonal
Immunogen:	The immunogen for anti-AP2A1 antibody: synthetic peptide directed towards the C terminal of human AP2A1. Synthetic peptide located within the following region: ILAKLKRKKGPGAGSALDDGRRDPSSNDINGGMEPTPSTVSTPSPSADLL
Formulation:	Liquid. Purified antibody supplied in 1x PBS buffer with 0.09% (w/v) sodium azide and 2% sucrose. <i>Note that this product is shipped as lyophilized powder to China customers.</i>
Conjugation:	Unconjugated
Storage:	Store at -20°C as received.
Stability:	Stable for 12 months from date of receipt.
Predicted Protein Size:	105 kDa
Gene Name:	adaptor related protein complex 2 alpha 1 subunit
Database Link:	<a href="#">NP_570603</a> <a href="#">Entrez Gene 160 Human</a> <a href="#">O95782</a>
Background:	This gene encodes the alpha 1 adaptin subunit of the adaptor protein 2 (AP-2) complex found in clathrin coated vesicles. The AP-2 complex is a heterotetramer consisting of two large adaptins (alpha or beta), a medium adaptin (mu), and a small adaptin (sigma). The complex is part of the protein coat on the cytoplasmic face of coated vesicles which links clathrin to receptors in vesicles. Alternative splicing of this gene results in two transcript variants encoding two different isoforms. A third transcript variant has been described, but its full length nature has not been determined.



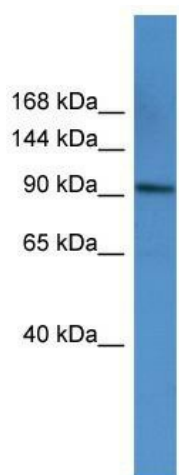
[View online »](#)

**Synonyms:** ADTAA; AP2-ALPHA; CLAPA1

**Note:** Immunogen Sequence Homology: Horse: 100%; Human: 100%; Dog: 93%; Pig: 93%; Rat: 86%; Mouse: 86%; Bovine: 86%; Rabbit: 86%; Guinea pig: 86%

**Protein Pathways:** Endocytosis, Huntington's disease

**Product images:**



WB Suggested Anti-AP2A1 Antibody Titration: 0.2-1 ug/ml; ELISA Titer: 1:62500; Positive Control: Human brain