

Product datasheet for **TA342800**

alpha 2C Adrenergic Receptor (ADRA2C) Rabbit Polyclonal Antibody

Product data:

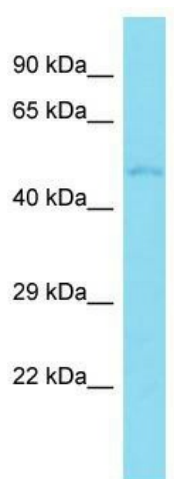
Product Type:	Primary Antibodies
Applications:	WB
Recommended Dilution:	WB
Reactivity:	Mouse
Host:	Rabbit
Isotype:	IgG
Clonality:	Polyclonal
Immunogen:	The immunogen for anti-Adra2c antibody is: synthetic peptide directed towards the middle region of Mouse Adra2c. Synthetic peptide located within the following region: TRTLSEKRGPDGASPTTENGLGKAAGENGHCAPPRTEVEPDESSAAE
Formulation:	Liquid. Purified antibody supplied in 1x PBS buffer with 0.09% (w/v) sodium azide and 2% sucrose. <i>Note that this product is shipped as lyophilized powder to China customers.</i>
Conjugation:	Unconjugated
Storage:	Store at -20°C as received.
Stability:	Stable for 12 months from date of receipt.
Predicted Protein Size:	50 kDa
Gene Name:	adrenoceptor alpha 2C
Database Link:	NP_000674 Entrez Gene 11553 Mouse P18825
Background:	Alpha-2 adrenergic receptors mediate the catecholamine-induced inhibition of adenylate cyclase through the action of G proteins.
Synonyms:	ADRA2L2; ADRA2RL2; ADRARL2; ALPHA2CAR
Note:	Immunogen Sequence Homology: Dog: 100%; Pig: 100%; Rat: 100%; Human: 100%; Mouse: 100%; Guinea pig: 85%
Protein Families:	Druggable Genome, GPCR, Transmembrane



[View online »](#)

Protein Pathways: Neuroactive ligand-receptor interaction

Product images:



Host: Rabbit; Target Name: Adra2c; Sample
Tissue: Mouse Brain lysates; Antibody Dilution:
1.0 ug/ml