

## Product datasheet for **TA342799**

### alpha 2C Adrenergic Receptor (ADRA2C) Rabbit Polyclonal Antibody

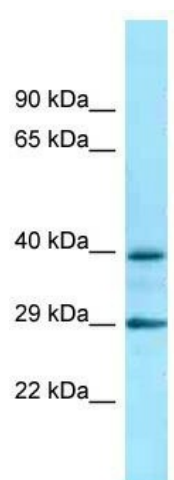
#### Product data:

Product Type:	Primary Antibodies
Applications:	WB
Recommended Dilution:	WB
Reactivity:	Human
Host:	Rabbit
Isotype:	IgG
Clonality:	Polyclonal
Immunogen:	The immunogen for anti-ADRA2C antibody is: synthetic peptide directed towards the C-terminal region of Human ADRA2C. Synthetic peptide located within the following region: RAGAEGGAGGADGQGAGPGAESGALTASREWGGERGRPLCLPPSARGCF
Formulation:	Liquid. Purified antibody supplied in 1x PBS buffer with 0.09% (w/v) sodium azide and 2% sucrose. <i>Note that this product is shipped as lyophilized powder to China customers.</i>
Purification:	Affinity Purified
Conjugation:	Unconjugated
Storage:	Store at -20°C as received.
Stability:	Stable for 12 months from date of receipt.
Predicted Protein Size:	41 kDa
Gene Name:	adrenoceptor alpha 2C
Database Link:	<a href="#">NP_000674</a> <a href="#">Entrez Gene 152 Human P18825</a>
Background:	The function of this protein remains unknown.
Synonyms:	ADRA2L2; ADRA2RL2; ADRARL2; ALPHA2CAR
Note:	Immunogen Sequence Homology: Human: 100%; Pig: 85%
Protein Families:	Druggable Genome, GPCR, Transmembrane
Protein Pathways:	Neuroactive ligand-receptor interaction



[View online »](#)

## Product images:



Host: Rabbit; Target Name: ADRA2C; Sample  
Tissue: THP-1 Whole Cell lysates; Antibody  
Dilution: 1.0 ug/ml