

## Product datasheet for **TA342798**

### alpha 2a Adrenergic Receptor (ADRA2A) Rabbit Polyclonal Antibody

#### Product data:

Product Type:	Primary Antibodies
Applications:	WB
Recommended Dilution:	WB
Reactivity:	Human
Host:	Rabbit
Isotype:	IgG
Clonality:	Polyclonal
Immunogen:	The immunogen for anti-ADRA2A antibody is: synthetic peptide directed towards the C-terminal region of Human ADRA2A. Synthetic peptide located within the following region: RRPERGPRGKKGKARASQVKPGDSLPRRGPGATGIGTPAAGPGEERVGAAK
Formulation:	Liquid. Purified antibody supplied in 1x PBS buffer with 0.09% (w/v) sodium azide and 2% sucrose. <i>Note that this product is shipped as lyophilized powder to China customers.</i>
Conjugation:	Unconjugated
Storage:	Store at -20°C as received.
Stability:	Stable for 12 months from date of receipt.
Predicted Protein Size:	49 kDa
Gene Name:	adrenoceptor alpha 2A
Database Link:	<a href="#">NP_000672</a> <a href="#">Entrez Gene 150 Human P08913</a>



[View online »](#)

**Background:** Alpha-2-adrenergic receptors are members of the G protein-coupled receptor superfamily. They include 3 highly homologous subtypes: alpha2A, alpha2B, and alpha2C. These receptors have a critical role in regulating neurotransmitter release from sympathetic nerves and from adrenergic neurons in the central nervous system. Studies in mouse revealed that both the alpha2A and alpha2C subtypes were required for normal presynaptic control of transmitter release from sympathetic nerves in the heart and from central noradrenergic neurons; the alpha2A subtype inhibited transmitter release at high stimulation frequencies, whereas the alpha2C subtype modulated neurotransmission at lower levels of nerve activity. This gene encodes alpha2A subtype and it contains no introns in either its coding or untranslated sequences.

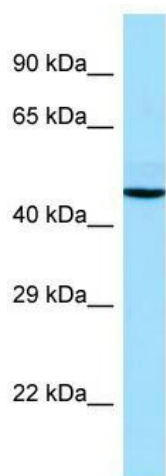
**Synonyms:** ADRA2; ADRA2R; ADRAR; ALPHA2AAR; ZNF32

**Note:** Immunogen Sequence Homology: Human: 100%; Bovine: 92%; Dog: 85%; Pig: 85%; Rat: 79%; Mouse: 79%; Guinea pig: 79%

**Protein Families:** Druggable Genome, GPCR, Transmembrane

**Protein Pathways:** Neuroactive ligand-receptor interaction

### Product images:



WB Suggested Anti-ADRA2A Antibody; Titration: 1.0 ug/ml; Positive Control: Fetal Thymus