

Product datasheet for **TA342793**

TMIGD3 Rabbit Polyclonal Antibody

Product data:

Product Type:	Primary Antibodies
Applications:	WB
Recommended Dilution:	WB
Reactivity:	Human
Host:	Rabbit
Isotype:	IgG
Clonality:	Polyclonal
Immunogen:	The immunogen for anti-ADORA3 antibody: synthetic peptide directed towards the C terminal of human ADORA3. Synthetic peptide located within the following region: DFTELIVTDDKGTLANDFWSGKDLSGNKTRSCAPKVVRKADRRTSILI
Formulation:	Liquid. Purified antibody supplied in 1x PBS buffer with 0.09% (w/v) sodium azide and 2% sucrose. <i>Note that this product is shipped as lyophilized powder to China customers.</i>
Conjugation:	Unconjugated
Storage:	Store at -20°C as received.
Stability:	Stable for 12 months from date of receipt.
Predicted Protein Size:	39 kDa
Gene Name:	transmembrane and immunoglobulin domain containing 3
Database Link:	NP_065734 Entrez Gene 57413 Human P0DMS9
Background:	This gene encodes a protein that belongs to the family of adenosine receptors, which are G-protein-coupled receptors that are involved in a variety of intracellular signaling pathways and physiological functions. The receptor encoded by this gene mediates a sustained cardioprotective function during cardiac ischemia, it is involved in the inhibition of neutrophil degranulation in neutrophil-mediated tissue injury, it has been implicated in both neuroprotective and neurodegenerative effects, and it may also mediate both cell proliferation and cell death.

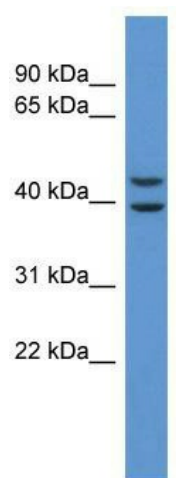


[View online »](#)

Synonyms: AD026

Note: Immunogen Sequence Homology: Human: 100%; Pig: 79%; Bovine: 79%

Product images:



WB Suggested Anti-ADORA3 Antibody; Titration: 1.0 ug/ml; Positive Control: U937 Whole Cell