

## Product datasheet for **TA342792**

### TMIGD3 Rabbit Polyclonal Antibody

#### Product data:

Product Type:	Primary Antibodies
Applications:	IHC, WB
Recommended Dilution:	WB, IHC
Reactivity:	Human
Host:	Rabbit
Isotype:	IgG
Clonality:	Polyclonal
Immunogen:	The immunogen for anti-ADORA3 antibody: synthetic peptide directed towards the C terminal of human ADORA3. Synthetic peptide located within the following region: RSCKAPKVVVRKADRSRTSILIICILITGLGIISVISHLTKRRRSQRNRRV
Formulation:	Liquid. Purified antibody supplied in 1x PBS buffer with 0.09% (w/v) sodium azide and 2% sucrose. <i>Note that this product is shipped as lyophilized powder to China customers.</i>
Conjugation:	Unconjugated
Storage:	Store at -20°C as received.
Stability:	Stable for 12 months from date of receipt.
Predicted Protein Size:	30 kDa
Gene Name:	transmembrane and immunoglobulin domain containing 3
Database Link:	<a href="#">NP_001075445</a> <a href="#">Entrez Gene 57413 Human</a> <a href="#">P0DMS9</a>
Background:	This gene encodes a protein that belongs to the family of adenosine receptors, which are G-protein-coupled receptors that are involved in a variety of intracellular signaling pathways and physiological functions. The receptor encoded by this gene mediates a sustained cardioprotective function during cardiac ischemia, it is involved in the inhibition of neutrophil degranulation in neutrophil-mediated tissue injury, it has been implicated in both neuroprotective and neurodegenerative effects, and it may also mediate both cell proliferation and cell death. Multiple transcript variants encoding different isoforms have been found for this gene.

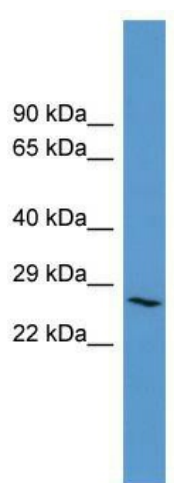


[View online »](#)

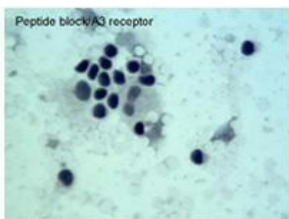
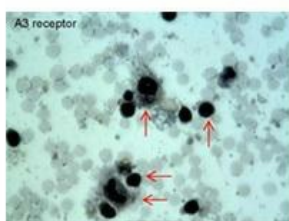
**Synonyms:** AD026

**Note:** Immunogen Sequence Homology: Human: 100%; Horse: 93%; Pig: 85%; Rabbit; Bovine: 75%

**Product images:**



WB Suggested Anti-ADORA3 Antibody Titration:  
0.2-1 ug/ml; ELISA Titer: 1:62500; Positive Control:  
Human Lung



Sample type -- Oral Cell Carcinoma Dilution --  
5ug/mL