

Product datasheet for **TA342791**

Adenosine A2b Receptor (ADORA2B) Rabbit Polyclonal Antibody

Product data:

Product Type:	Primary Antibodies
Applications:	WB
Recommended Dilution:	WB
Reactivity:	Human
Host:	Rabbit
Isotype:	IgG
Clonality:	Polyclonal
Immunogen:	The immunogen for anti-ADORA2B antibody: synthetic peptide directed towards the C terminal of human ADORA2B. Synthetic peptide located within the following region: AKSLAMIVGIFALCWLPVHAVNCVTLFQPAQGKNKPKWAMNMAILLSHAN
Formulation:	Liquid. Purified antibody supplied in 1x PBS buffer with 0.09% (w/v) sodium azide and 2% sucrose. <i>Note that this product is shipped as lyophilized powder to China customers.</i>
Conjugation:	Unconjugated
Storage:	Store at -20°C as received.
Stability:	Stable for 12 months from date of receipt.
Predicted Protein Size:	36 kDa
Gene Name:	adenosine A2b receptor
Database Link:	NP_000667 Entrez Gene 136 Human P29275
Background:	This gene encodes an adenosine receptor that is a member of the G protein-coupled receptor superfamily. This integral membrane protein stimulates adenylate cyclase activity in the presence of adenosine. This protein also interacts with netrin-1, which is involved in axon elongation. The gene is located near the Smith-Magenis syndrome region on chromosome 17.
Synonyms:	ADORA2



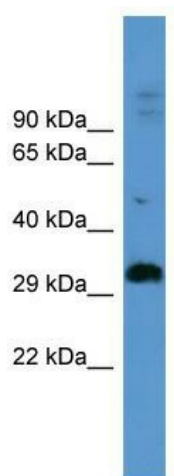
[View online »](#)

Note: Immunogen Sequence Homology: Human: 100%; Horse: 93%; Rabbit: 86%; Dog: 79%; Pig: 79%; Guinea pig: 79%

Protein Families: Druggable Genome, GPCR, Transmembrane

Protein Pathways: Calcium signaling pathway, Neuroactive ligand-receptor interaction, Vascular smooth muscle contraction

Product images:



WB Suggested Anti-ADORA2B Antibody Titration:
0.2-1 ug/ml; ELISA Titer: 1:62500; Positive Control:
293T cell lysate